



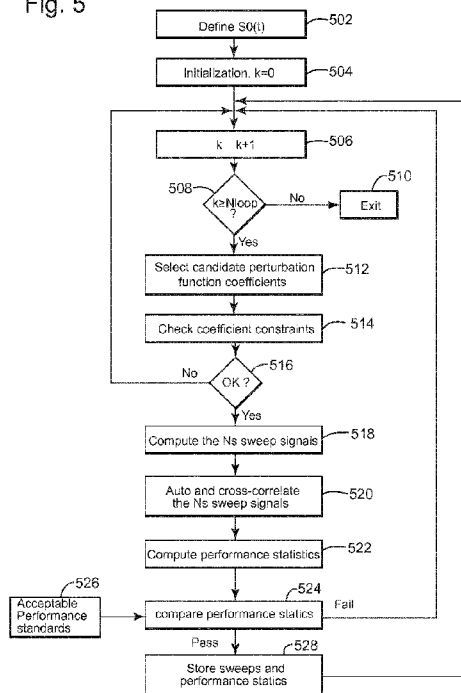
- (51) International Patent Classification:
G01V 1/00 (2006.01)
- (21) International Application Number:
PCT/EP2014/063454
- (22) International Filing Date:
25 June 2014 (25.06.2014)
- (25) Filing Language: English
- (26) Publication Language: English
- (30) Priority Data:
61/839,915 27 June 2013 (27.06.2013) US
- (71) Applicant: CGG SERVICES SA [FR/FR]; 27, avenue Carnot, F-91300 Massy (FR).
- (72) Inventors: CASTOR, Kaelig; c/o CGG Services SA 27 avenue Carnot, F-91300 Massy (FR). BIANCHI, Thomas; c/o CGG Services SA 27, avenue Carnot, F-91300 Massy (FR). SALLAS, John; c/o CGG Services SA 27 avenue Carnot, F-91300 Massy (FR).
- (74) Agent: REGIMBEAU; 20, rue de Chazelles, F-75847 Paris Cedex 17 (FR).

- (81) Designated States (unless otherwise indicated, for every kind of national protection available): AE, AG, AL, AM, AO, AT, AU, AZ, BA, BB, BG, BH, BN, BR, BW, BY, BZ, CA, CH, CL, CN, CO, CR, CU, CZ, DE, DK, DM, DO, DZ, EC, EE, EG, ES, FI, GB, GD, GE, GH, GM, GT, HN, HR, HU, ID, IL, IN, IR, IS, JP, KE, KG, KN, KP, KR, KZ, LA, LC, LK, LR, LS, LT, LU, LY, MA, MD, ME, MG, MK, MN, MW, MX, MY, MZ, NA, NG, NI, NO, NZ, OM, PA, PE, PG, PH, PL, PT, QA, RO, RS, RU, RW, SA, SC, SD, SE, SG, SK, SL, SM, ST, SV, SY, TH, TJ, TM, TN, TR, TT, TZ, UA, UG, US, UZ, VC, VN, ZA, ZM, ZW.
- (84) Designated States (unless otherwise indicated, for every kind of regional protection available): ARIPO (BW, GH, GM, KE, LR, LS, MW, MZ, NA, RW, SD, SL, SZ, TZ, UG, ZM, ZW), Eurasian (AM, AZ, BY, KG, KZ, RU, TJ, TM), European (AL, AT, BE, BG, CH, CY, CZ, DE, DK, EE, ES, FI, FR, GB, GR, HR, HU, IE, IS, IT, LT, LU, LV, MC, MK, MT, NL, NO, PL, PT, RO, RS, SE, SI, SK, SM, TR), OAPI (BF, BJ, CF, CG, CI, CM, GA, GN, GQ, GW, KM, ML, MR, NE, SN, TD, TG).

[Continued on next page]

(54) Title: INSTANTANEOUS FREQUENCY MODULATION ACQUISITION SCHEME FOR SEISMIC SOURCES

Fig. 5



(57) Abstract: Computing device, computer software and methods for generating sweep signals corresponding to plural sources that generate seismic waves. The method includes selecting (502) a nominal sweep signal (S0); applying (512) a perturbation (P) to the nominal sweep signal (S0); and calculating (518) the sweep signals (Sn) by varying the perturbation (P), each sweep signal corresponding to a seismic source.

WO 2014/207074 A1

Declarations under Rule 4.17:

- *as to applicant's entitlement to apply for and be granted a patent (Rule 4.17(ii))*
- *as to the applicant's entitlement to claim the priority of the earlier application (Rule 4.17(iii))*
- *of inventorship (Rule 4.17(iv))*

Published:

- *with international search report (Art. 21(3))*
- *before the expiration of the time limit for amending the claims and to be republished in the event of receipt of amendments (Rule 48.2(h))*

Instantaneous Frequency Modulation Acquisition Scheme for Seismic Sources

BACKGROUND

TECHNICAL FIELD

5 **[0001]** Embodiments of the subject matter disclosed herein generally relate to methods and systems and, more particularly, to mechanisms and techniques for generating an acquisition scheme for vibratory sources.

DISCUSSION OF THE BACKGROUND

10 **[0002]** Reflection seismology is a method of geophysical exploration to determine the properties of a portion of a subsurface layer in the earth, which information is especially helpful in the oil and gas industry. Conventional reflection seismology uses a controlled source that sends mechanical waves into the earth. By measuring the time it takes for the reflections and/or refractions to come back to
15 plural receivers, it is possible to estimate the depth and/or composition of the features causing such reflections. These features may be associated with subterranean hydrocarbon deposits.

[0003] Various sources of seismic energy have been utilized in the art to impart the seismic waves into the earth. Such sources have included two general
20 types: 1) impulsive energy sources, and 2) seismic vibrator sources. The first type of geophysical prospecting utilizes an impulsive energy source, such as dynamite or a marine air gun, to generate the seismic signal. With an impulsive energy source, a large amount of energy is injected into the earth in a very short period of time. Accordingly, the resulting data has a relatively high signal-to-noise ratio, which

facilitates subsequent data processing operations. On the other hand, use of an impulsive energy source can pose certain safety and environmental concerns.

[0004] The second type of geophysical prospecting employs a seismic vibrator (e.g., a land or marine seismic vibrator) as the energy source, wherein the seismic vibrator is commonly used to propagate energy signals over an extended period of time, as opposed to the near instantaneous energy provided by impulsive sources. Thus, a seismic vibrator may be employed as the source of seismic energy which, when energized, imparts relatively low-level energy signals into the earth. The seismic process employing such use of a seismic vibrator is sometimes referred to as "VIBROSEIS" prospecting. In general, vibroseis is commonly used in the art to refer to a method used to propagate energy signals into the earth over an extended period of time, as opposed to the near instantaneous energy provided by impulsive sources. The data recorded in this way is then correlated to convert the extended source signal into an impulse.

[0005] Typically, the impartation of energy with vibrator devices is for a preselected energization interval, and data are recorded during the energization interval and a subsequent "listening" interval. It is desirable for the vibrator to radiate varying frequencies into the earth's crust during the energization interval. In such instances, energy at a beginning frequency is first imparted into the earth, and the vibration frequency changes over the energization interval at some rate until the end frequency is reached at the end of the interval. The difference between the beginning and end frequencies of the sweep generator is known as the range of the sweep, and the length of time in which the generator has to sweep through those frequencies is known as the sweep time.

[0006] Vibrators typically employ a sweep generator, and the output of the sweep generator is coupled to the input of the vibrator device. The output of the sweep generator dictates the manner in which the frequency of the energization signal, which is imparted into the earth, varies as a function of time.

5 **[0007]** Several methods for varying the rate of change of the frequency of the sweep generator during the sweep time have been proposed. For example, in the case of a linear sweep, the frequency output of the sweep generator changes linearly over the sweep time at the rate dictated by the starting and end frequencies and the sweep time. Further, nonlinear sweeps have been proposed to shape the
10 output frequency spectrum amplitude in which the rate of change of the frequency of the sweep generator varies nonlinearly between the starting and end frequencies over the sweep time. Examples of nonlinear sweeps have been quadratic sweeps and logarithmic sweeps.

[0008] The frequency of the seismic sweep may start low and increase with
15 time (i.e., "an up-sweep") or it may begin high and gradually decrease (i.e., "a down-sweep"). Typically, the frequency range today is, say from about 3 Hertz (Hz) to some upper limit that is often less than 200 Hz, and most commonly the range is from about 6 Hz to about 100 Hz.

[0009] The seismic data recorded during vibroseis prospecting (hereinafter
20 referred to as "vibrator data") comprises composite signals, each having many long, reflected wavetrains superimposed upon one another. Since these composite signals are typically many times longer than the interval between reflections, it is not possible to distinguish individual reflections from the recorded signal. However, when the seismic vibrator data is cross-correlated with the sweep signal (also known

as the "reference signal"), the resulting correlated data approximates the data that would have been recorded if the source had been an impulsive energy source.

[0010] In order to increase the Vibroseis acquisition productivity, there is a present trend in the industry to perform simultaneous shooting. A problem with simultaneous shooting is the crosstalk induced by each source. This problem, usually named the "cocktail party" problem, prevents retrieving each individual shot without source-coupling noise. Several methods are investigated to treat the simultaneous shooting issues. Minimizing the mixture noise in simultaneous shooting can be achieved either after acquisition during data processing, or before acquisition by choosing adequate source signals in order to facilitate the shot separation. A possible solution is to choose orthogonal signals for driving the sources or, at least, weakly correlated signals for the sources. The design of separable orthogonal pseudo-random source signals using pseudo-random source signals as described in U.S. Patent No. 8,274,862, assigned to the assignee of the present application, the entire content of which is incorporated by reference herein have been developed. Pseudo-random signals have good orthogonal properties. Beyond their high-productivity potential, they have the advantage of minimizing the eventual excitation of resonance frequencies of infrastructures in urban or industrial environments because their energy is spread over the overall time-frequency plan. Two difficulties noted with the use of pseudo-random source signals are: 1) they are more difficult to be handled by the vibrator's electronic servo-control mechanism than swept sine waves, and 2) the IMD (intermodulation distortion) noise can be more difficult to remove in processing than harmonic noise associated with swept sine wave signals. The first difficulty can lead to output source signals whose amplitude

spectrum do not follow the amplitude spectrum of the reference signal and can vary as the source moves from shot point to shot point. The second difficulty can produce noise artifacts that if not removed can mask the reflection data.

[0011] Thus, there is a need for finding other type of orthogonal driving signals that simultaneously drive seismic sources and are easy to control with minimum intermodulation noise.

SUMMARY

[0012] According to one exemplary embodiment, there is a method for generating sweep signals corresponding to plural sources that generate seismic waves. The method includes selecting a nominal sweep signal (S0); applying a perturbation (P) to the nominal sweep signal (S0); and calculating the sweep signals (Sn) by varying the perturbation (P), each sweep signal corresponding to a seismic source.

[0013] According to another embodiment, there is a computing device for generating sweep signals corresponding to plural sources that generate seismic waves. The computing device includes a processor configured to select a nominal sweep signal (S0); apply a perturbation (P) to the nominal sweep signal (S0); and calculate the sweep signals (Sn) by varying the perturbation (P), each sweep signal corresponding to a seismic source.

[0014] According to another embodiment, there is a computer readable medium including computer executable instructions, wherein the instructions, when executed, implement a method for generating sweep signals corresponding to plural sources that generate seismic waves, as discussed in the above paragraphs.

BRIEF DESCRIPTION OF THE DRAWINGS

[0015] The accompanying drawings, which are incorporated in and constitute a part of the specification, illustrate one or more embodiments and, together with the description, explain these embodiments. In the drawings:

[0016] Figures 1-4 are graphs of instantaneous phase, instantaneous frequency, sweep rate and amplitude power spectrum for a source signal having a linear sweep;

[0017] Figure 5 is a flowchart of a method for calculating plural sweeps for plural sources;

[0018] Figure 6 illustrates four sweeps calculated based on the method illustrated in Figure 5;

[0019] Figure 7 illustrates the amplitude spectrum for the sweeps of Figure 6;

[0020] Figure 8 is a flowchart of a method for selecting best sweeps for acquiring seismic data;

[0021] Figures 9-11 are graphs of instantaneous phase, instantaneous frequency, and sweep rate for two source signals corresponding to sources S1 and S2, each signal phase modulated by a sinusoidal time-variant-frequency function;

[0022] Figures 12 and 13 illustrate the driving signals of two sources S1 and S2 in the time domain;

[0023] Figure 14 is a graph of the amplitude power spectrum for the two sources of Figures 12 and 13;

[0024] Figure 15 is a graph of the amplitude of the autocorrelation wavelet for the source S1 driving signal;

[0025] Figure 16 is a graph of the amplitude of the cross-correlation wavelet between sources S1 and S2's source signals;

[0026] Figures 17-19 are graphs of instantaneous phase, instantaneous frequency, and sweep rate for two linear sweep source signals that have been

5 modulated with a single-frequency modulation function;

[0027] Figure 20 is a graph of the amplitude energy spectrum for the two source signals;

[0028] Figure 21 is a graph of an autocorrelation wavelet amplitude of the driving signal for a first source;

10 **[0029]** Figure 22 is a graph of a cross-correlation wavelet amplitude of the driving signals between the first and second sources;

[0030] Figures 23-25 are graphs of instantaneous phase, instantaneous frequency, and sweep rate for two exponential sweep source signals that have been phase modulated by a sinusoidal-time-variant frequency function;

15 **[0031]** Figure 26 is a graph of the amplitude power spectrum for the two source signals;

[0032] Figure 27 is a graph of an autocorrelation wavelet amplitude of the driving signal for a first source;

[0033] Figure 28 is a graph of a cross-correlation wavelet amplitude between
20 the driving signals for the first and second sources;

[0034] Figure 29 is a graph of a force limit experienced by a source; and

[0035] Figure 30 is a schematic diagram of a controller according to an exemplary embodiment.

DETAILED DESCRIPTION

[0036] The following description of the exemplary embodiments refers to the accompanying drawings. The same reference numbers in different drawings identify the same or similar elements. The following detailed description does not limit the invention. Instead, the scope of the invention is defined by the appended claims. The following embodiments are discussed, for simplicity, with regard to the terminology and structure of a vibroseis seismic source. However, the embodiments to be discussed next are not limited to this structure, but may be applied to other arrays or sources that generate a seismic wave having a controlled frequency range.

[0037] Reference throughout the specification to “one embodiment” or “an embodiment” means that a particular feature, structure, or characteristic described in connection with an embodiment is included in at least one embodiment of the subject matter disclosed. Thus, the appearance of the phrases “in one embodiment” or “in an embodiment” in various places throughout the specification is not necessarily referring to the same embodiment. Further, the particular features, structures or characteristics may be combined in any suitable manner in one or more embodiments.

[0038] According to an exemplary embodiment, a nominal Vibroseis source signal is modified to have various types of sweep rate, instantaneous phase and instantaneous-frequency modulation rates. Changes in the sweep rate in the Vibroseis sources give useful source separation properties for simultaneous shooting. Conceptually, this source signal design can be seen as an ideal concatenation of multiple normalized short sweeps with different characteristics like unique sweep rates, sweep times and/or frequency bandwidths. The initial phase of the modified frequency-modulation term in the signal generation can be changed for

the use of numerous separable Vibroseis sources. The time-averaged power, the ease with which the spectrum can be shaped in conjunction with desirable autocorrelation and cross-correlation properties make this a viable source signal option for surveys conducted using simultaneous sources. Another advantage of
5 instantaneous-frequency modulated sweeps is that they precisely have an instantaneous frequency that can be clearly identified and handled by the vibrator electronics, and also used for noise identification which is not the case for pseudo-random sweeps.

[0039] Thus, according to an embodiment, there is a method for reaching
10 pseudo-orthogonality between sources by selecting a nominal sweep and then modifying its characteristics by modulating/and or altering the sweep rate, the instantaneous phase and/or the instantaneous frequency of a nominal "sweep" (or "chirp"). A parameterized perturbation function can be used to create a suite of pseudo-orthogonal sweeps, by changing, for example, the parameters defining the
15 frequency modulation such as the endpoint values, frequency or the initial phase of the modulation perturbation function, it is possible to obtain several resultant source signals almost orthogonal to one another. The amplitude spectrum of each resultant source signal shows, as discussed later, some oscillations and/or fluctuations associated with the sweep-rate and instantaneous-frequency oscillations so that the
20 greater the dwell time (time spent to vibrate a certain frequency) is, the higher the amplitude spectrum is. The instantaneous frequency vs. time relationship of the resultant source signals can either be a strictly monotonous function or a non-monotonous function (alternatively increasing and decreasing) emitting several times the same frequency, or, in one case, a multi-valued function where several

frequencies can be emitted at the same instant. For the last two cases, similarly to random signals, the amplitude spectrum becomes noisy by displaying some notches which can be a drawback; however, the cross-correlation is much more spread out over the overall time which improves the orthogonality between two signals.

5 **[0040]** In the case of a function characterized by a one-to-one mapping, a single instantaneous frequency is still identifiable so it is possible to use some existing noise removal techniques to overcome the source distortion. Also, a source signal with an identifiable instantaneous frequency is particularly well-adapted to the control of vibrator hydraulics and servo-mechanism even if it is not specifically
10 required. The hydraulic fluid flow requirement of the source's servo-mechanism (if such source is used) is spread out over time for a random signal and the time signal is smooth so that the peak demand on hydraulic components is reduced. Typically, a vibrator controller is a closed loop feedback system whereby a drive signal applied to the servo-hydraulic system is adjusted so that the vibrator output signal (usually a
15 force) tracks a reference (target) signal. Tracking of low bandwidth signals requires less closed-loop control bandwidth than is required to track high bandwidth signals. If only a narrow range of frequencies are imparted at every point within a sweep, the vibrator control electronics do not have to work as hard to maintain a low tracking error as they might if a pseudo-random sweep were used, for example the control
20 response time can be slower.

[0041] Another advantage of the new signals is that the effective power of the sweep is higher for a pseudo-sine waveform signal than for a band-limited random source signal. An instantaneous frequency that is, for example, strictly a monotonous function of time leads to an amplitude spectrum without any

discontinuity, which is an interesting advantage in comparison to the pseudorandom signals. By considering the stationary phase approximation, which is satisfied when the signal envelope varies slowly in regard to the instantaneous frequency, the amplitude spectrum of the source signal is proportional to the inverse of the square root of the sweep modulation rate (or "sweep rate"). The sweep rate is defined as
 5 the time derivative of the instantaneous frequency. Thus, it is possible to control the amplitude spectrum oscillations by tuning accordingly the sweep-rate variations.

[0042] Prior to discussing the novel method for generating driving signals with instantaneous-frequency modulation, a brief discussion about conventional Vibroseis
 10 acquisition is believed to be in order. The Vibroseis acquisition traditionally uses a sweep source signal $s(t)$ defined as a sinusoid with a continuously variable instantaneous frequency $F(t)$ defined by:

$$s(t) = E(t) \cos(\varphi(t)) \quad (1)$$

where $E(t)$ is the amplitude (i.e., the envelope) and is a positive continuous function over time interval $[0, L]$ and L is the time duration of the sweep, i.e., the sweep
 15 length. If $E(t) = 1$, the sweep is called a unit amplitude sweep. The amplitude function $E(t)$ is usually tapered at the start and the end of the sweep. The instantaneous phase $\varphi(t)$ is a continuous and smooth function over the sweep time-interval $[0-L]$.

[0043] The instantaneous frequency $F(t)$ in units of Hz of the sweep, which is
 20 the single frequency contained in the signal at a single time instant t , is a continuous function of time on interval $[0, L]$ and it is expressed as the time derivative of the instantaneous phase:

$$F(t) = \frac{1}{2\pi} \frac{\partial \varphi(t)}{\partial t}. \quad (2)$$

[0044] The sweep rate $R(t)$ in units of Hz/s is defined as the time derivative of the instantaneous frequency $F(t)$:

$$R(t) = \frac{\partial F(t)}{\partial t}. \quad (3)$$

[0045] A linear up-sweep is defined by a constant sweep rate $R(t)$ expressed as:

$$R = \frac{F_e - F_b}{L} \quad (4)$$

5 where F_b is the beginning frequency and F_e is the end frequency of the sweep and $F_e > F_b$. In other words, the frequency bandwidth of the linear sweep is the interval $[F_b, F_e]$. Thus, the instantaneous frequency of a unit amplitude sweep can be calculated based on equation (3) to be:

$$F(t) = \int_0^t R(\tau) d\tau. \quad (5)$$

[0046] Thus, for a linear up-sweep, the instantaneous frequency varies
10 linearly with time as expressed by:

$$F(t) = F_b + \frac{F_e - F_b}{L} t. \quad (6)$$

[0047] Integrating equation (2) and using equations (1) and (6), it is possible to calculate the linear sweep as expressed by:

$$s(t) = E(t) \cos \left[2\pi \left(F_b + \frac{F_e - F_b}{2L} t \right) t \right]. \quad (7)$$

[0048] Figure 1 shows the instantaneous phase, Figure 2 shows the instantaneous frequency, Figure 3 shows the sweep rate and Figure 4 shows the
15 amplitude spectrum for the linear sweep described by equation (7) assuming

$F_b=8\text{Hz}$, $F_e=80\text{ Hz}$ and $L=48\text{s}$. While equations (4) to (7) describe a linear sweep, a non-linear sweep is next discussed.

[0049] In Vibroseis acquisition, the instantaneous frequency $F(t)$ is generally taken as a monotonically increasing function of time as illustrated in Figure 2. A non-linear sweep is defined by a sweep rate $R(t)$ that is not constant with time, so that there is a non-linear relationship of the instantaneous frequency $F(t)$ versus time. Non-linear sweeps are generally used to shape the amplitude of the sweep frequency-spectrum. Indeed, using the method of stationary phase, which is described by E. Rietsch, "Vibroseis signals with prescribed power spectrum," Geophysical Prospecting 25, pp. 613-620, (1977), the entire content of which is incorporated herein by reference, it is possible to demonstrate the following relationship between the amplitude $|\tilde{S}(f)|$ of the sweep frequency-spectrum and the sweep rate $R(f)$ expressed as a function of frequency for a unit amplitude sweep:

$$|\tilde{S}(f)| \approx \frac{1}{\sqrt{R(f)}}. \quad (8)$$

[0050] Equation (8) provides information about how changes in sweep rate impact the shape of the energy spectral density of the source signal so that the performance of various candidate phase-modulation schemes can be predicted and/or evaluated. The energy spectral density of a signal is closely related to the shape of the autocorrelation properties of the source signal and generally, the smoother the energy spectral density is, the more compact and the lower the side-lobe levels will be for the autocorrelation wavelet. An energy spectral density shape without deep spectral notches and high energy output over all frequencies of interest, low side-lobes in the autocorrelation function and the ability to create

orthogonal source signals for low cross-talk between sources are all desirable properties that are possible to achieve with frequency modulated swept sine wave signals as discussed next.

[0051] According to various embodiments to be discussed next, the

5 instantaneous frequency $F(t)$ is selected to include a frequency perturbation term on top of a conventional swept sine wave for use with simultaneous sources to improve source separation. There are many frequency perturbation describing functions that might be used for defining the instantaneous frequency and the following
embodiments present a few examples of such describing functions. However, those
10 skilled in the art would recognize that other describing functions may be selected to achieve good source separation for simultaneously driven sources.

[0052] A general search procedure for finding sweeps, unique for each source, that fulfill some given conditions, e.g., when the sources operate simultaneously, their signal contributions need to be separated, is now discussed.

15 The assumptions for this general procedure may be the following: suppose that it is desired to operate N_s sources simultaneously with a sweep length L , frequency range F_b to F_e , with a given amount of cross talk between the sweeps and a maximum drop in the energy spectrum, and, optionally, there are some equipment constraints and also some vibrator electronics constraints (e.g., the instantaneous
20 sweep rate should not exceed R_{max}). What procedure should be used to address all these factors and to calculate N_s sweep signals?

[0053] One way to find an optimal solution is to perform a search procedure as now discussed with regard to Figure 5. It is possible to parameterize the process so that only a few coefficients need to change to adjust each particular sweep. A

general sweep frequency versus time profile and sweep amplitude versus frequency profile is selected and by selecting different coefficient values for the parameter set, each of the N_s sweeps can be perturbed. A polynomial could be used to represent the frequency perturbation function P . Specific examples of this perturbation

5 function are later discussed. For example, for the case where there are N_s vibrators, four coefficients may be selected to characterize the perturbation function P :

$$P(t, n) = A_n + B_n t + C_n t^2 + D_n t^3, \quad (9)$$

where n is a number between 1 and N_s . For this case P is a cubic polynomial.

Those skilled in the art would recognize that other coefficients may be selected for the perturbation function. The nominal sweep to which the sweep rate perturbation

10 will be applied is considered to be S_0 , and it is selected in step 500. Thus, a nominal sweep may be given by:

$$S_0(t) = \alpha(t) \cos \left(\varphi_0 + 2\pi \int F_{nom}(t) dt \right) \quad (10)$$

and the perturbed N_s candidate sweeps are given by:

$$S_n(t, n) = \alpha(t) \cos \left\{ \varphi_n + 2\pi \int [F_{nom}(t) + P(t, n)] dt \right\}, \quad (11)$$

where F_{nom} is the nominal frequency, φ_n is the sweep phase offset, that is also part of the coefficient parameter set, and $\alpha(t)$ is the amplitude envelope of the sweep.

15 To simplify matters, it is assumed that the amplitude envelope $\alpha(t)$ is the same for all the sources for the search. However, in practice, it may be desirable to include other search parameters to accommodate different amplitude envelopes for each source, for example, it is possible to have unique amplitude envelope functions for each source. The same is true for other terms of the nominal sweep S_0 , i.e., these

20 terms may be constrained based on the physical limitations of each vibrator. An

example is the case when the plural vibrators used during the seismic survey are different, i.e., they have different functional constraints. One such example may be when one vibrator is hydraulic and another one is electric. Those skilled in the art would understand that there are many other situations when the vibrators have
5 different functional constraints, even if all the vibrators are hydraulic or electric.

[0054] The choice for the coefficients $\{A_n, B_n, C_n, D_n\}$ of P are constrained so that the initial and final frequencies of the sweep are within δ_f (for example $\delta_f = 1$ Hz) of the nominal sweep start and end frequencies for S_0 ,

$$-\delta_f \leq P(O, n) \leq \delta_f \text{ and } (12)$$

$$-\delta_f \leq P(L, n) \leq \delta_f. (13)$$

[0055] A further constraint can be added so that the instantaneous frequency

10 for each of the n candidate sweeps be strictly monotonically increasing

$$0 < \frac{d}{dt} P(t, n) + \frac{d}{dt} F(t). (14)$$

[0056] Furthermore, it is possible to constrain the maximum change in the sweep rate introduced by P to deviate less than 50% ($\gamma = 0.5$) from the sweep rate of the nominal sweep S_0 so that the energy amplitude spectrum is close to the same (within -3dB to $+1.8\text{dB}$),

$$\left| \frac{d}{dt} P(t) \right| \leq \gamma \cdot \frac{d}{dt} F(t). (15)$$

15 **[0057]** Thus, there are 5 variables to modify during the search for finding the N_s sweeps.

[0058] Equations (12)-(15) can be rewritten as:

$$-\delta_f \leq A_n \leq \delta_f (16)$$

$$-\delta_f \leq A_n + L\{B_n + L[C_n + L(D_n)]\} \leq \delta_f (17)$$

$$0 < B_n + 2C_n t + 3D_n t^2 + \frac{d}{dt} F(t) \text{ for } 0 \leq t \leq L, \text{ and (18)}$$

$$\left| B_n + 2C_n t + 3D_n t^2 - \frac{d}{dt} F(t) \right| \leq \gamma \frac{d}{dt} F(t). \text{ (19)}$$

[0059] With this formalism in place, the method advances to step 504 where an index k is initialized, for example, to be zero. Index k is indicative of how many iterations to perform before stopping the search process. In step 506 the value of index k is increased by one and in step 508 a condition for index k is checked, e.g., whether k is larger or equal to a given value N_{loop} , where the user selects the value. If index k has reached the value N_{loop} , then the process stops in step 510. If not, the process advances to step 512, in which candidate perturbation function coefficients are selected (see, e.g., equation (9)). After this, in step 514, the coefficients constraints (see, e.g., equations (16) to (19)) are checked. If the results of this step are determined in step 516 to have failed, the process returns to step 506 to select other coefficients. If the results are ok, the process advances to step 518 to compute the N_s sweep signals. In step 520 the N_s sweep signals may be auto- and cross-correlated with each other and in step 522 various performance statistics are computed. In step 524 the calculated performance statistics are compared with reference performance statistics stored in step 526 in a storage device associated with the computing device performing this process, and if the result is a pass, the calculated sweep signals are stored in step 528 and the process stops. Otherwise, the process returns to step 506 to select another set of coefficients.

[0060] In one example, $F(t)$ is assumed to be a linear sweep so that it can be written as:

$$F(t) = Fb + Rt, \text{ where } R = \frac{Fe - Fb}{L} \text{ (20) and}$$

$$\alpha(t) = \begin{cases} 0.5 \left(1 - \cos\left(\frac{\pi t}{TL}\right) \right) & \text{for } t < TL \\ 1 & \text{for } TL < t < L - t \\ 0.5 \left(1 - \cos\left(\frac{\pi(L-t)}{TL}\right) \right) & \text{for } t > L - TL \end{cases} \quad (21)$$

where TL is the end taper length. For this example, if the following values are chose, TL = 0.2 s, L = 10 s, Fb = 8 Hz, Fe = 108 Hz, $\delta_f = 1$ Hz (frequency bandwidth variation toleration) and $\gamma = 0.5$, then R = 10 Hz/s, F(t) = 8 + 10t and equations (16) to (19) become:

$$-1 \leq A_n \leq 1 \quad (22)$$

$$-1 \leq A_n + 10B_n + 100C_n + 1000D_n \leq 1 \quad (23)$$

$$-10 < B_n + 2C_n t + 3D_n t^2, \quad \text{for } 0 \leq t \leq 10, \text{ and} \quad (24)$$

$$5 \leq B_n + 2C_n t + 3D_n t^2 \leq 15, \quad \text{for } 0 \leq t \leq 10. \quad (25)$$

5 From here, for this specific example, a search can be performed by choosing A_n from a set of random numbers contained in the closed interval of [-1,1] and B_n can be chosen from a set of random numbers contained in the closed interval of [5,15]. Substituting the candidate values for A_n and B_n into inequalities (23) and (25), limits the range of random numbers pool for C_n and D_n .

10 **[0061]** Considering only four sources, i.e., $N_s = 4$, the above algorithm was run for this specific example and Figure 6 illustrates the sweep waveforms or signals versus time corresponding to the four sources S1 to S4 and Figure 7 shows the amplitude spectra for the various sweeps.

15 **[0062]** Recognizing that multiple sweeps may be calculated for the same source and all satisfy the criteria discussed above, there is a method, as illustrated in Figure 8, for selecting appropriate sweeps. The method may include a step 800 of

importing sweep candidates (e.g., calculated as described with reference to Figure 5) and performance statistics, a step 802 of ranking the sweeps by performance, a step 804 of selecting a suite of N_s sweeps that have the best performance based on one or more criteria. For example, the ranking criteria may be based upon things like: cross-talk (cross-correlation noise between sweeps) where low cross-talk is desirable, and/or autocorrelation side-lobe levels where low side-lobe levels particularly at long lags is desirable; and/or, amplitude spectrum shape (where a sweep with less spectral droop for the same cross-talk level is preferable. A step 806 of downloading the selected N_s sweeps to the controller of the source, a step 808 of verifying the performance of the source with the downloaded sweeps, and a step 810 of acquiring the seismic data.

[0063] Further embodiments are now discussed. According to an embodiment, the instantaneous frequency $F(t)$ may be a combination of a constant frequency term (e.g., nominal frequency) and a sinusoidal-varying frequency function (e.g., perturbation, see, equation (24)) whose frequency increases linearly with time so that the instantaneous frequency $F(t)$ for two sources indexed $\{k = 1, 2\}$ can be expressed as, where the $k=0$ corresponds to source S1 and the $k=1$ corresponds to source S2:

$$F(t) = \frac{F_b + F_e}{2} + \frac{F_e - F_b}{2} \cos[\phi_k + 2\pi F_{mod} T(t)], \quad (26)$$

where $\phi_k = \frac{2\pi k}{N_s}$ with $k = 0$ to $N_s - 1$, $T(t)$ is the distorted time-scale and it is given by a parabolic function of time, e.g., $T(t) = (at + b)t$ where a and b are selectable parameter constants, and the constant F_{mod} is considered to be:

$$F_{mod} = \frac{N_{cycles}}{L}, \quad (27)$$

where N_{cycles} may be chosen to have any value, for example, 20. The instantaneous phase for this modulation scheme is illustrated in Figure 9, the instantaneous frequency is illustrated in Figure 10 and the sweep rate is illustrated in Figure 11, assuming $F_b=8\text{Hz}$, $F_e=80\text{ Hz}$ and $L=48\text{s}$. It can be seen in Figure 9 that the analytic phases of both sources S1 and S2 have a linear increasing phase trend with sinusoidal perturbations about the ramp that is increasing in frequency. The instantaneous frequency in Figure 10 is proportional to the time derivative of phases shown in Figure 9, and both instantaneous frequencies vary sinusoidally about their mean frequency of 44 Hz and the perturbation frequency increases with time. The sweep rate shown in Figure 11, which is the time derivative of the frequencies of Figure 10, it can be seen that the amplitude of the instantaneous sweep rate increases with time. In this particular example, the instantaneous sweep rates may be in excess of 150 Hz/s, which in practice may be a challenge for the vibrator controller. Although high instantaneous sweep rates may be a challenge for present vibrator controllers, this embodiment has the purpose to show how to modulate the instantaneous frequency irrespective of the limitations of the control signals. Other modulation perturbation functions that avoid high instantaneous sweep rates are later discussed.

[0064] The time-signals 1 and 2 for the modulation scheme discussed above are illustrated in Figures 12 and 13. Figure 14 shows the amplitude spectrum, Figure 15 shows the autocorrelation of source S1's signal 1, and Figure 16 shows the cross-correlation of the two signals 1 and 2 corresponding to sources S1 and S2. As can be seen in Figures 14, 15 and 16, this particular embodiment has many of the same characteristics of a pseudorandom signal, i.e., 1) Figure 14 shows that it

has a not so smooth energy spectral density; 2) Figure 15 shows that the amplitude of the near side-lobes is low but that the longer lag sidelobes do not fall off as they would for a conventional swept sine wave; and 3) Figure 16 shows that the cross-correlation artifacts are about the same as the autocorrelation side-lobe levels with very low crosstalk energy near the zero lag. Note that because only two sources were used for the above example, the initial phase has been chosen to be zero. However, more sources may be considered by changing the initial phase to be:

$$\phi_k = \frac{2\pi k}{N_s}, \quad (28)$$

with N_s being the number of sources and ϕ_k is the initial phase of the k^{th} source, with index number $k = 0 \dots N_s - 1$.

10 **[0065]** Another way to mathematically define the same modulation scheme is to use pseudo-sweeps as described by equation:

$$F(t) = \frac{F_b + F_e}{2} + \frac{F_e - F_b}{2} \cos \left[\phi_k + 2\pi \int_0^t v(\tau) d\tau \right], \quad (29)$$

where L_1 and L_2 (see, equation (30)) are the pseudo-sweeps time duration and have a value of 2 and 1, respectively, and $v(\tau)$ is the instantaneous modulation-frequency of the instantaneous frequency $F(t)$ of the sweep expressed as follows:

$$v(\tau) = \frac{1}{2L_1} + \frac{1}{L} \left(\frac{1}{2L_2} - \frac{1}{2L_1} \right) t, \quad (30)$$

15 where, in one embodiment, the sum of L_1 and L_2 should not be greater than the sweep length L .

[0066] According to another embodiment, there is a single-oscillation modulation scheme that applies a single-cycle fluctuation to the instantaneous

frequency with a linearly increasing average in time as described by the following equation:

$$F(t) = F_b + \frac{F_e - F_b}{L}t + A_m \sin[\phi_k + 2\pi F_{mod}t], \quad (31)$$

where $F(t)$ is the sum of the nominal frequency $F_{nom} = F_b + \frac{F_e - F_b}{L}t$ and the

perturbation term, i.e., $P(t) = A_m \sin[\phi_k + 2\pi F_{mod}t]$, A_m is a selectable constant

5 amplitude coefficient (having a value of, for example, 5 in Figures 17-22) and

$N_{cycles} = 1$ for F_{mod} given by equation (27). Similar to the previous embodiment, for

two sources S1 and S2, the initial phase ϕ_0 was taken to be zero. However, more

sources may be added by changing the initial phase similar to equation (28). For

this modulation scheme, Figure 17 illustrates the instantaneous phases for sources

10 S1 and S2, Figure 18 illustrates the instantaneous frequency, Figure 19 illustrates

the sweep rate, Figure 20 illustrates the amplitude spectrum, Figure 21 illustrates the

first source's autocorrelation signal (note that the side lobes are greatly reduced) and

Figure 22 illustrates the cross-correlation of the first and second sources' signals 1

and 2.

15 **[0067]** Still another modulation scheme is described in the next embodiment.

This modulation scheme applies an exponential increasing average in time function

as described by:

$$F(t) = 2F_b + \frac{K_r^{T(t)} - 1}{\ln(K_r)} + F_b \sin[\phi_k + 2\pi F_{mod}T(t)], \quad (32)$$

where constant K_r has been chosen to be 1.2 in the example shown in Figures 23 to

28. These figures respectively illustrate the instantaneous phase, instantaneous

20 frequency, sweep rate, amplitude spectrum, autocorrelation and cross-correlation for

the exponential increasing average in time modulation scheme.

[0068] A design of the phase-modulated sweeps may be performed by modeling the relationship between the cross-correlation, time-frequency distribution, the frequency spectrum and the instantaneous-frequency of the desired set of signals. In other words, unlike the previous embodiments, the phase modulated signal was directly designed, now a cross-correlation pattern (the desired output) is targeted with various desired constraints, for example, on the maximum variation of the spectrum amplitude or the cross-correlation spreading time, and then generate the phase modulated signal. For example, the amplitude spectra displayed in Figure 20 exhibits some interesting properties because it is relatively flat with no notches. This is due to the monotony of the instantaneous frequency. The monotonous instantaneous frequency is a desirable and necessary condition for achieving an amplitude spectrum with no notch. Two useful features of one or more embodiments are (1) the ability to constrain the instantaneous sweep rate so that the resultant amplitude spectra do not have excessive droop (e.g., loss of signal energy over a particular frequency band) and (2) the flexibility to couple the instantaneous frequency modification scheme with other sweep methods that modify sweep rate to accommodate equipment/and or environmental constraints due to stroke, flow and/or nearby infrastructure, for example, sweep methods like EmphaSeis™ (CGG trademark) described in U.S. Patent 8,274,862, the entire content of which is included herein by reference. An embodiment to implement those useful features is now discussed.

[0069] Assume that is desirable is to limit the amplitude variation of the amplitude spectrum by conditioning the amplitude of the sweep rate modulation by fixing the maximum "droop" value δ_{max} defined by the maximum amplitude variation

(in dB) within the useful frequency bandwidth $[F_b, F_e]$. The sweep rate R_{mod} may be modeled as :

$$R_{mod}(f) = \exp\left(\frac{\ln(10)}{20} \delta_{max} \cos\left[2\pi f N_{cycles} \frac{f - F_b}{F_e - F_b} + \phi_k\right]\right) \quad (33a)$$

where N_{cycles} is a constant that corresponds to the number of oscillation cycles. In this embodiment, the selectable parameters are the initial phase represented as ϕ_0

5 and N_{cycles} . This equation may be rewritten as:

$$R_{mod}(in\ dB) = 20 \log_{10} R_{mod} = \delta_{max} \cos\left[2\pi f N_{cycles} \frac{f - F_b}{F_e - F_b} + \phi_k\right] \quad (33b)$$

This specific modulation shows: (1) the sweep rate modulation amplitude limitation δ_{max} in dB and (2) the sinusoidal modulation law of the sweep rate modulation.

Based on equation (31a), it is possible to modify the sweep rate further to accommodate temporal peak amplitude constraints used in sweep methods like

10 EmphaSeis, the modified sweep rate $R(f)$ being given by:

$$R(f) = R_{mod}(f) \cdot R_{EmphaSeisCorr}(f), \quad (34)$$

with the correction of the sweep-rate related to the EmphaSeis correction expressed as:

$$R_{EmphaSeisCorr}(f) = \left(\frac{\mathcal{F}_{lim}(f)}{\max(\mathcal{F}_{lim}(f))} \cdot \frac{1}{|\mathcal{A}(f)|}\right)^2 \quad (35)$$

where $|\mathcal{A}(f)|$ is a gain function chosen to shape a desired target signal amplitude spectrum $|\tilde{S}(f)|$, and $\mathcal{F}_{lim}(f)$ is the limit output force as a function of frequency

15 imposed by the vibrator mechanical constraints, e.g., the maximum reaction-mass displacement, the maximum pump flow, the peak force, and so one. Note that the sweep rate EmphaSeis correction aims to account for the vibrator mechanical limitations design as illustrated in Figure 29. Because the maximum force amplitude

delivered by the vibrator changes with frequency, using this weighting coefficient, the sweep rate is: (1) lowered adequately where the maximum sweep amplitude is limited by the vibrator (e.g., related to the first term $\frac{F_{lim}(f)}{\max(F_{lim}(f))}$), (2) adjusted adequately regarding the desired target amplitude spectrum for the output ground force (related to the second term $\frac{1}{|A(f)|}$). Figure 29 is an example of such output force limitation. Note that this graph changes from source to source depending on the characteristics of the source.

[0070] The embodiments discussed with regard to Figures 5-8 used cubic polynomials for perturbing the sweeps while the embodiments discussed with regard to Figures 9-29 used sine wave functions for the perturbation functions. The use of a single cubic polynomial may limit the embodiments to no more than one full cycle of frequency perturbation. If more cycles are desired, a method of bicubic splines may be used where different cubics are used to cover different time intervals with some smooth end conditions imposed, or the sine wave functions may be used.

[0071] If there is no limit to the amount of fluctuations, the autocorrelation sidelobes will tend to rise. This may or may not be a real issue, depending on whether or not signature deconvolution is used. Adjoined cubic splines, or higher order polynomials, for example, 4th or 5th order polynomials, can be used to describe the frequency perturbation function should the user desire to increase the number of allowed fluctuations.

[0072] Increasing the number of allowed fluctuations should reduce the cross-talk, but will probably increase the near sidelobe levels in the autocorrelation. The cubic perturbations may work better if longer sweeps are used.

[0073] An example of a representative computational system capable of carrying out operations in accordance with the exemplary embodiments discussed above is illustrated in Figure 30. Hardware, firmware, software or a combination thereof may be used to perform the various steps and operations described herein.

5 The control system 3000 of Figure 30 is an exemplary computing structure that may be used in connection with such a system.

[0074] The exemplary control system 3000 suitable for performing the activities described in the exemplary embodiments may include server 3001. Such a server 3001 may include a central processor unit (CPU) 3002 coupled to a random access memory (RAM) 3004 and to a read-only memory (ROM) 3006. The ROM 3006 may also be other types of storage media to store programs, such as programmable ROM (PROM), erasable PROM (EPROM), etc. The processor 3002 may communicate with other internal and external components through input/output (I/O) circuitry 3008 and bussing 3010, to provide control signals and the like. For example, the processor 3002 may communicate with the acquisition system and/or the vibrator control system. The processor 3002 carries out a variety of functions as is known in the art, as dictated by software and/or firmware instructions.

[0075] The server 3001 may also include one or more data storage devices, including hard and floppy disk drives 3012, CD-ROM drives 3014, and other hardware capable of reading and/or storing information such as a DVD, etc. In one embodiment, software for carrying out the above discussed steps may be stored and distributed on a CD-ROM 3016, diskette 3018 or other form of media capable of portably storing information. These storage media may be inserted into, and read by, devices such as the CD-ROM drive 3014, the disk drive 3012, etc. The server

3001 may be coupled to a display 3020, which may be any type of known display or presentation screen, such as LCD displays, plasma displays, cathode ray tubes (CRT), etc. A user input interface 3022 is provided, including one or more user interface mechanisms such as a mouse, keyboard, microphone, touch pad, touch
5 screen, voice-recognition system, etc.

[0076] The server 3001 may be coupled to other computing devices, such as the equipment of a vessel, via a network. The server may be part of a larger network configuration as in a global area network (GAN) such as the Internet 3028, which allows ultimate connection to the various landline and/or mobile client/watcher
10 devices.

[0077] As also will be appreciated by one skilled in the art, the exemplary embodiments may be embodied in a wireless communication device, a telecommunication network, as a method or in a computer program product. Accordingly, the exemplary embodiments may take the form of an entirely hardware
15 embodiment or an embodiment combining hardware and software aspects. Further, the exemplary embodiments may take the form of a computer program product stored on a computer-readable storage medium having computer-readable instructions embodied in the medium. Any suitable computer readable medium may be utilized including hard disks, CD-ROMs, digital versatile discs (DVD), optical storage devices,
20 or magnetic storage devices such a floppy disk or magnetic tape. Other non-limiting examples of computer readable media include flash-type memories or other known types of memories.

[0078] The disclosed exemplary embodiments provide a source array, computer software, and method for generating acquisition schemes for under water

vibrational sources. It should be understood that this description is not intended to limit the invention. On the contrary, the exemplary embodiments are intended to cover alternatives, modifications and equivalents, which are included in the spirit and scope of the invention as defined by the appended claims. Further, in the detailed
5 description of the exemplary embodiments, numerous specific details are set forth in order to provide a comprehensive understanding of the claimed invention. However, one skilled in the art would understand that various embodiments may be practiced without such specific details.

[0079] Although the features and elements of the present exemplary

10 embodiments are described in the embodiments in particular combinations, each feature or element can be used alone without the other features and elements of the embodiments or in various combinations with or without other features and elements disclosed herein.

[0080] This written description uses examples of the subject matter disclosed to

15 enable any person skilled in the art to practice the same, including making and using any devices or systems and performing any incorporated methods. The patentable scope of the subject matter is defined by the claims, and may include other examples that occur to those skilled in the art. Such other examples are intended to be within the scope of the claims.

WHAT IS CLAIMED IS:

1. A method for generating sweep signals corresponding to plural sources that generate seismic waves, the method comprising:

selecting (502) a nominal sweep signal (S0);

5 applying (512) a perturbation (P) to the nominal sweep signal (S0); and

calculating (518) the sweep signals (Sn) by varying the perturbation (P), each sweep signal corresponding to a seismic source.

2. The method of claim 1, wherein the perturbation (P) is an instantaneous
10 frequency perturbation that is applied to an instantaneous frequency (F(t)) of the nominal sweep signal (S0).

3. The method of claim 1, wherein the perturbation (P) is polynomial.

15 4. The method of claim 1, wherein the perturbation (P) is non-linear.

5. The method of claim 1, wherein the perturbation (P) includes a sine term.

6. The method of claim 1, further comprising:

20 selecting (512) coefficients that describe the perturbation (P).

7. The method of claim 6, further comprising:

applying constraints to the parameter space.

8. The method of claim 7, further comprising:

calculating candidate sweep signals;

calculating auto- and cross-correlations of the candidate sweep signals;

computing performance statistics associated with the auto- and cross-

5 correlations of the candidate sweep signals;

comparing the performance statistics with reference performing statistics; and

selecting the candidate sweep signals to be the sweep signals (S_n) if a result

of the comparing step is positive.

10 9. The method of claim 1, further comprising:

downloading in each source a corresponding sweep signal; and

acquiring seismic data with the sweep signals.

10. The method of claim 1, wherein each one of the sweep signals is unique

15 and when the plural sources operate simultaneously, a cross-correlation among the plural sources is minimized.

11. A computing device (3000) for generating sweep signals corresponding to plural sources that generate seismic waves, the computing device (3000)

20 comprising:

a processor (3002) configured to,

select (502) a nominal sweep signal (S_0);

apply (512) a perturbation (P) to the nominal sweep signal (S_0); and

calculate (518) the sweep signals (S_n) by varying the perturbation (P), each sweep signal corresponding to a seismic source.

12. The computing device of claim 11, wherein the perturbation (P) is an
5 instantaneous frequency perturbation that is applied to an instantaneous frequency ($F(t)$) of the nominal sweep signal (S_0).

13. The computing device of claim 11, wherein the perturbation (P) is
polynomial.
10

14. The computing device of claim 11, wherein the perturbation (P) is non-linear.

15. The computing device of claim 11, wherein the perturbation (P) includes a
15 sine term.

16. The computing device of claim 11, wherein the processor is further
configured to:
select (512) coefficients that describe the perturbation (P).
20

17. The computing device of claim 16, wherein the processor is further
configured to:
apply constraints to the parameter space.

18. The computing device of claim 17, wherein the processor is further configured to:

calculate candidate sweep signals;

calculate auto- and cross-correlations of the candidate sweep signals;

5 compute performance statistics associated with the auto- and cross-correlations of the candidate sweep signals;

compare the performance statistics with reference performing statistics; and

select the candidate sweep signals to be the sweep signals (S_n) if a result of the comparing step is positive.

10

19. The computing device of claim 11, wherein each one of the sweep signals is unique and when the plural sources operate simultaneously, a cross-correlation among the plural sources is minimized.

15

20. A non-volatile computer readable medium including computer executable instructions, wherein the instructions, when executed, implement a method for generating sweep signals corresponding to plural sources that generate seismic waves, the method comprising:

selecting (502) a nominal sweep signal (S_0);

20 applying (512) a perturbation (P) to the nominal sweep signal (S_0); and

calculating (518) the sweep signals (S_n) by varying the perturbation (P), each sweep signal corresponding to a seismic source.

25

Fig. 1

1/13

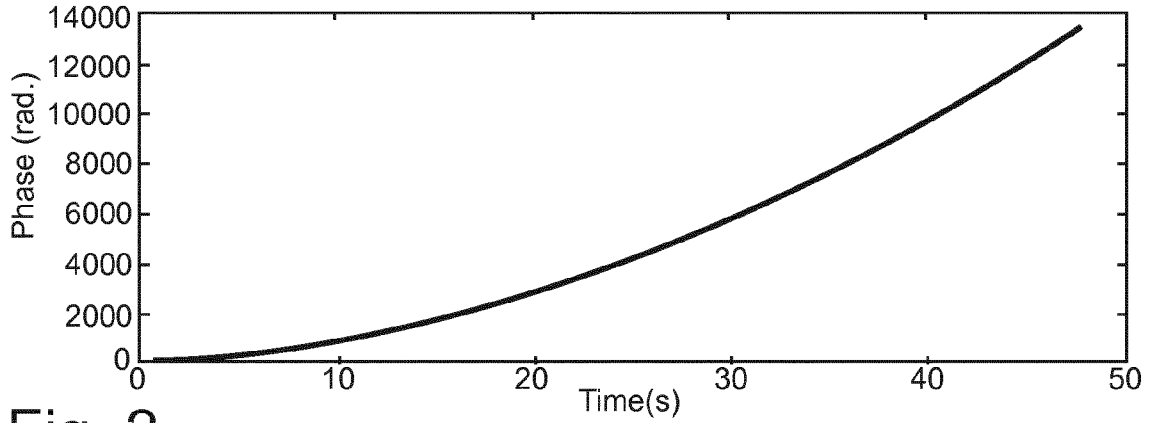


Fig. 2

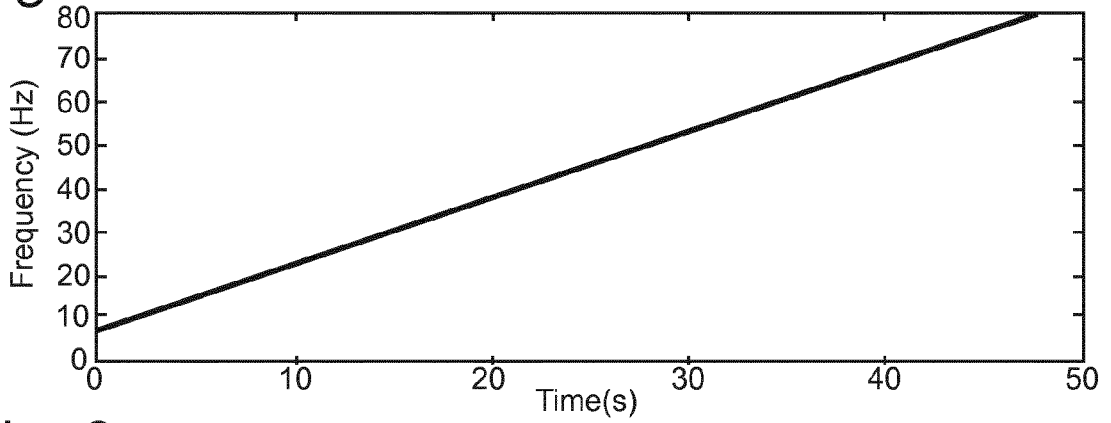


Fig. 3

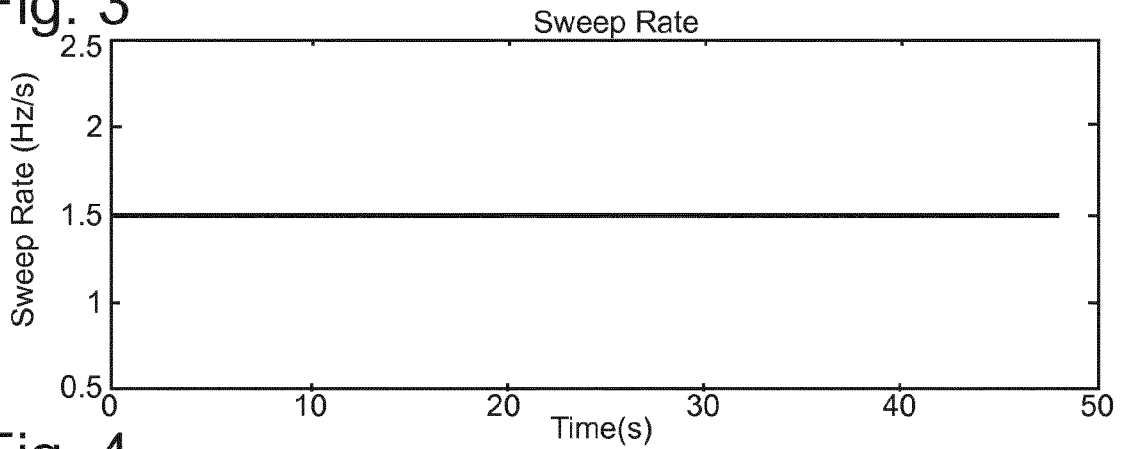


Fig. 4

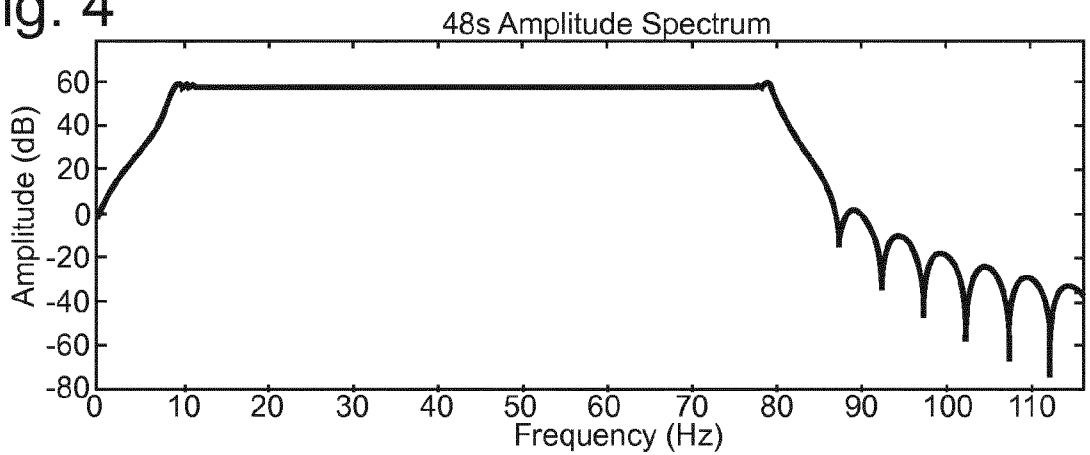


Fig. 5

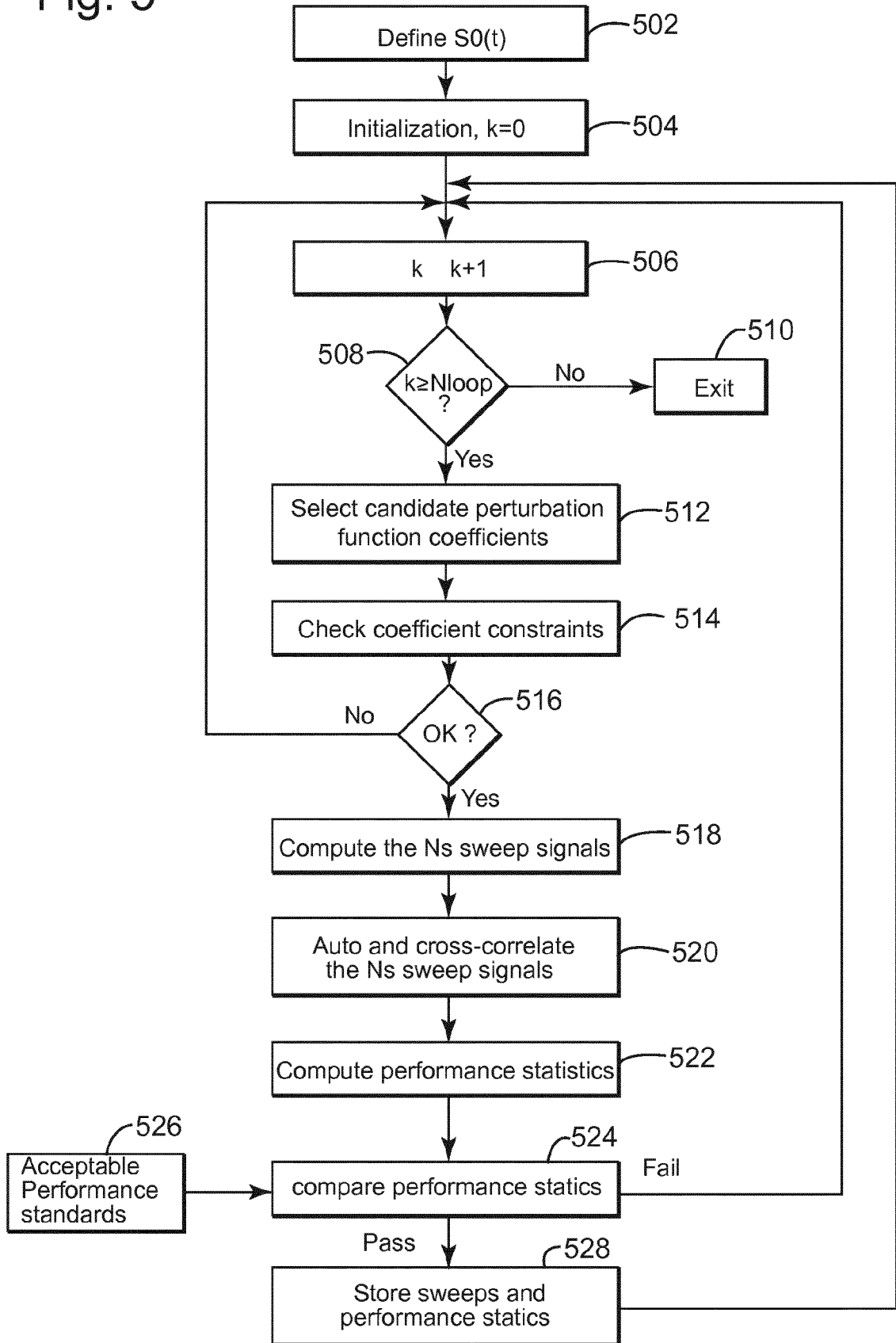


Fig. 6

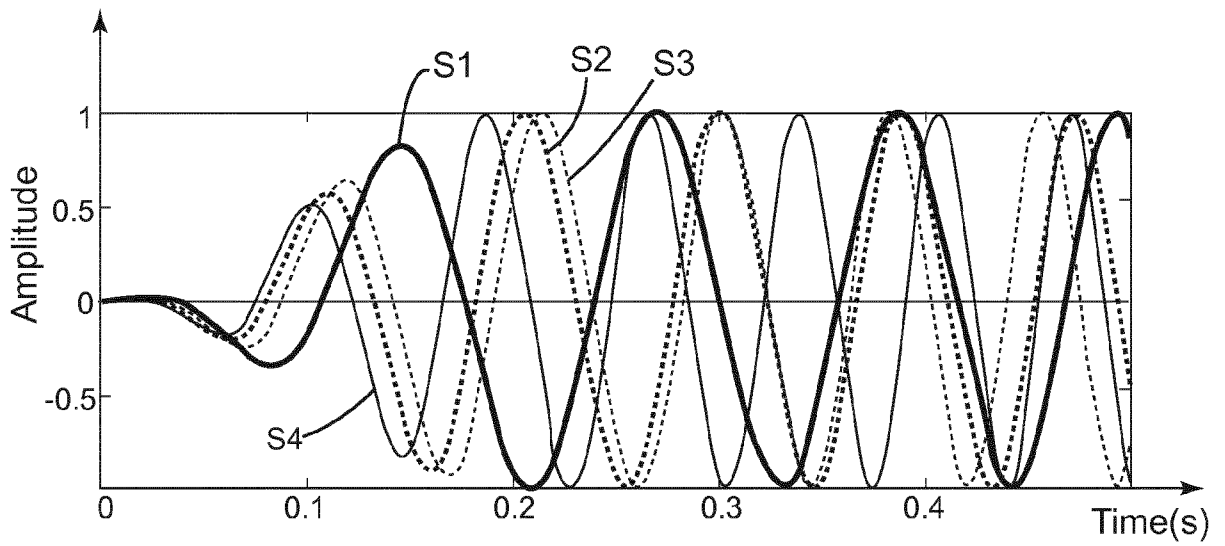
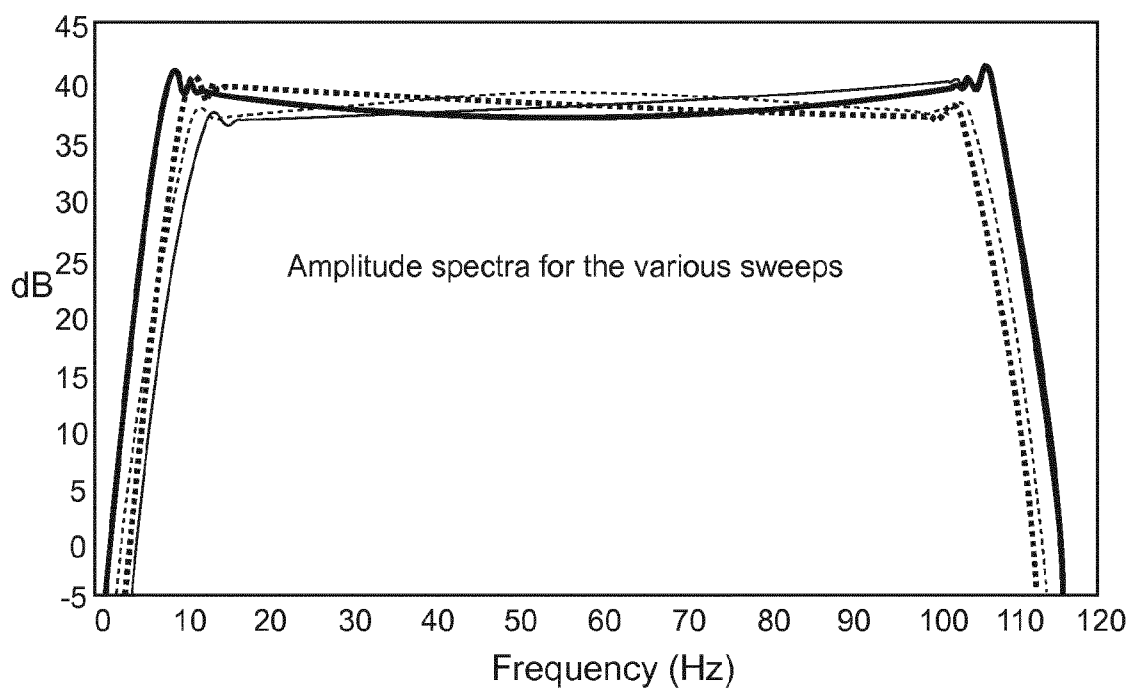


Fig. 7



4/13

Fig. 8

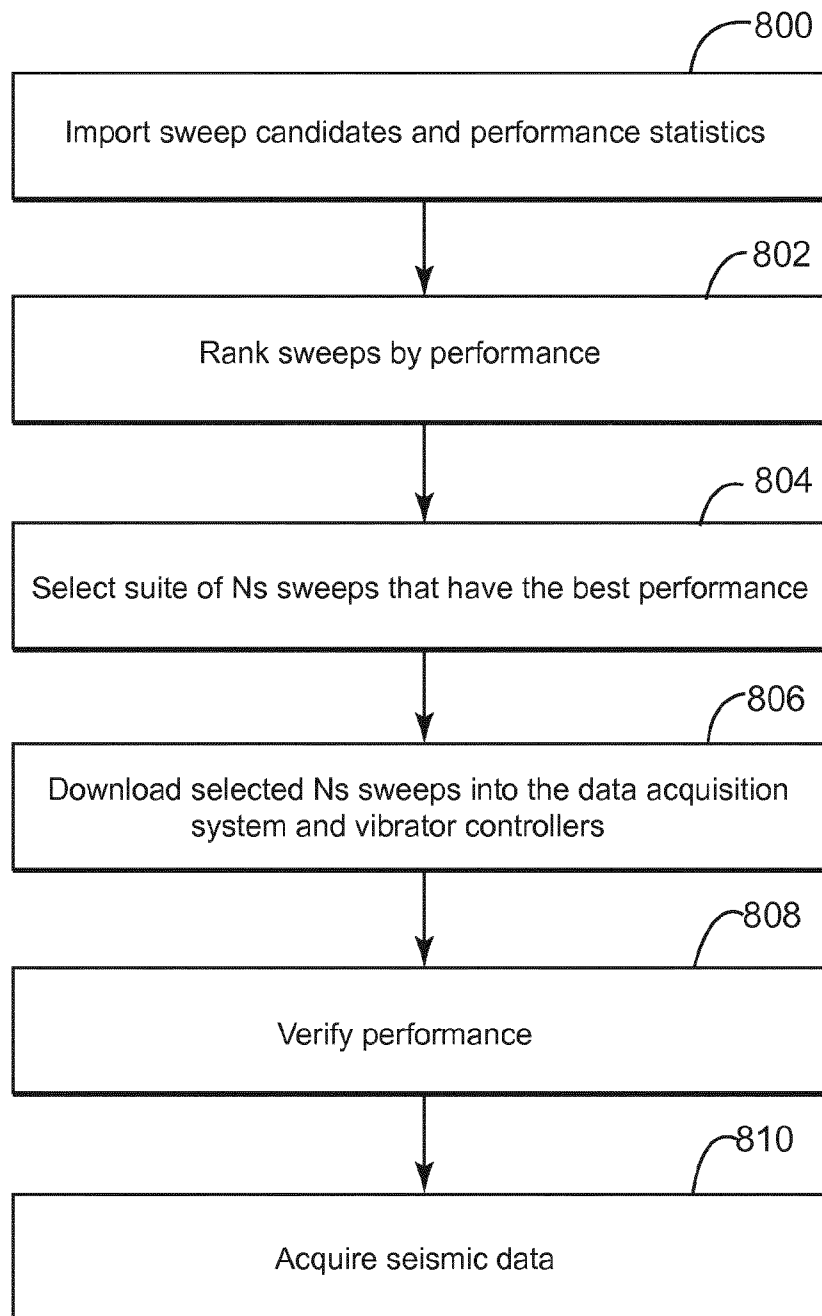


Fig. 9

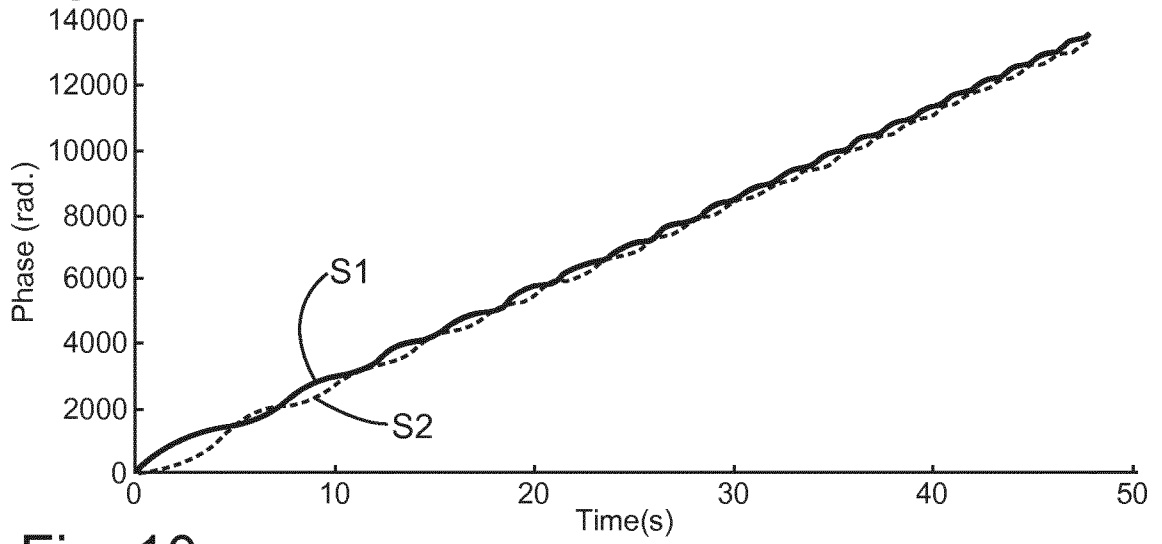


Fig. 10

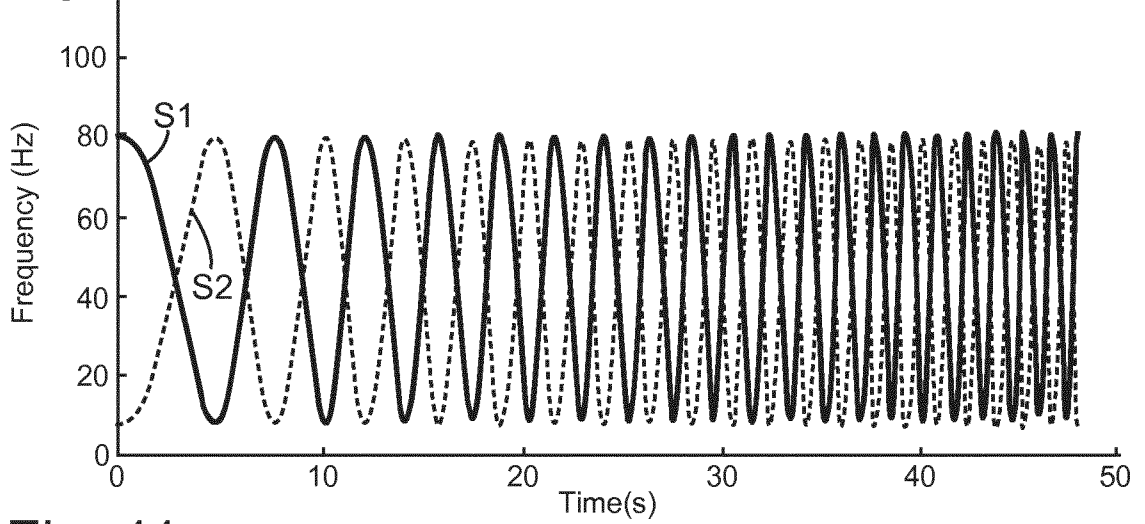
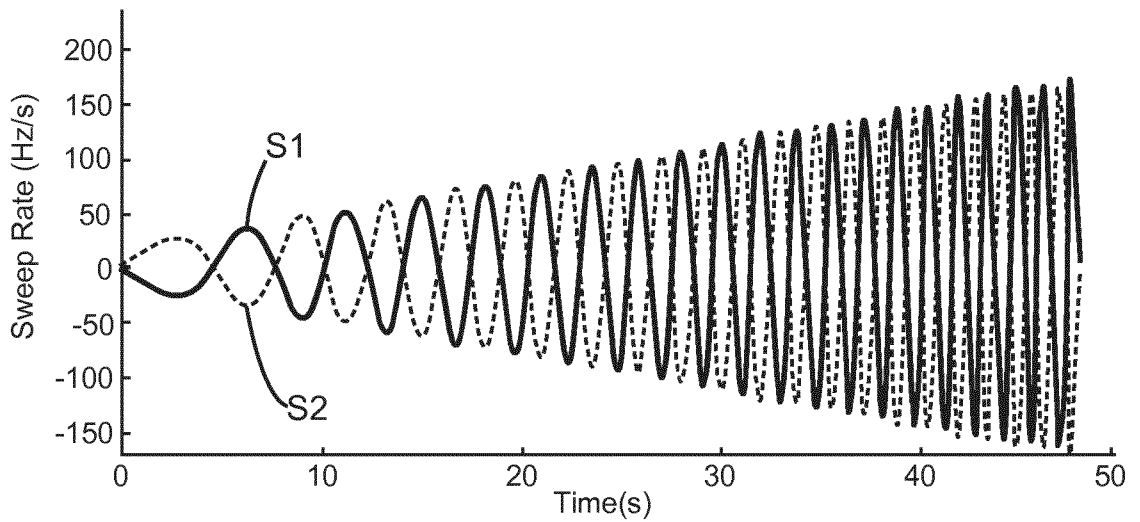


Fig. 11



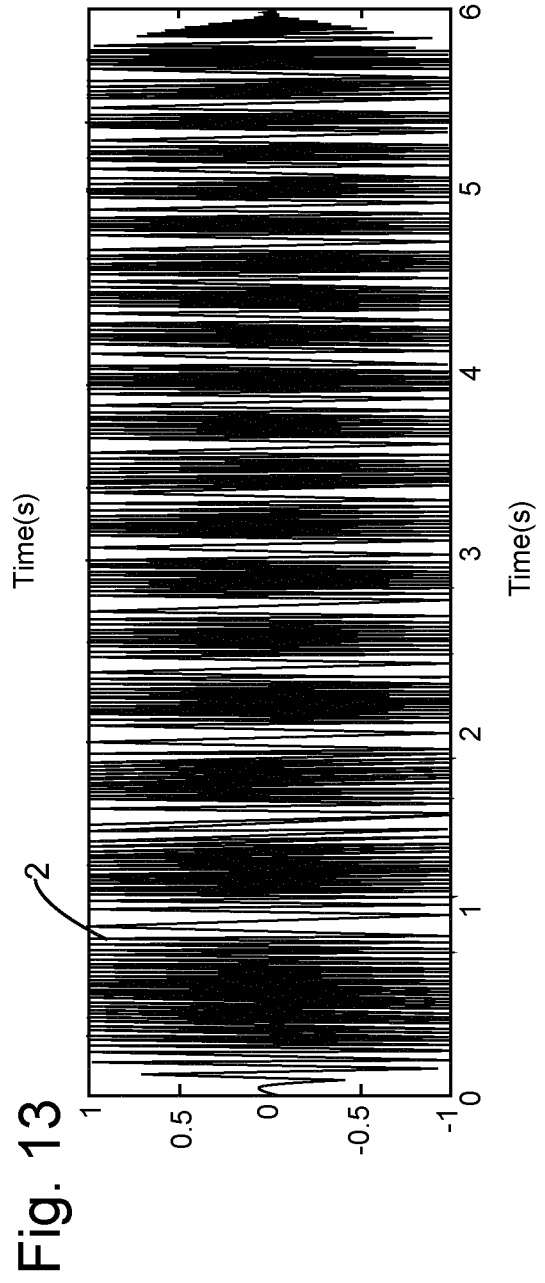
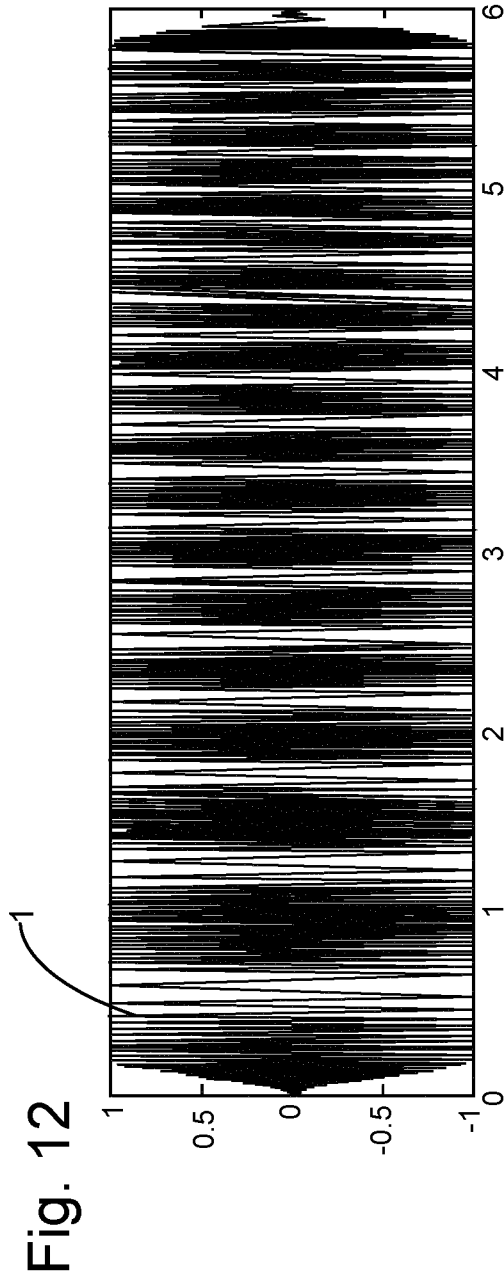


Fig. 14

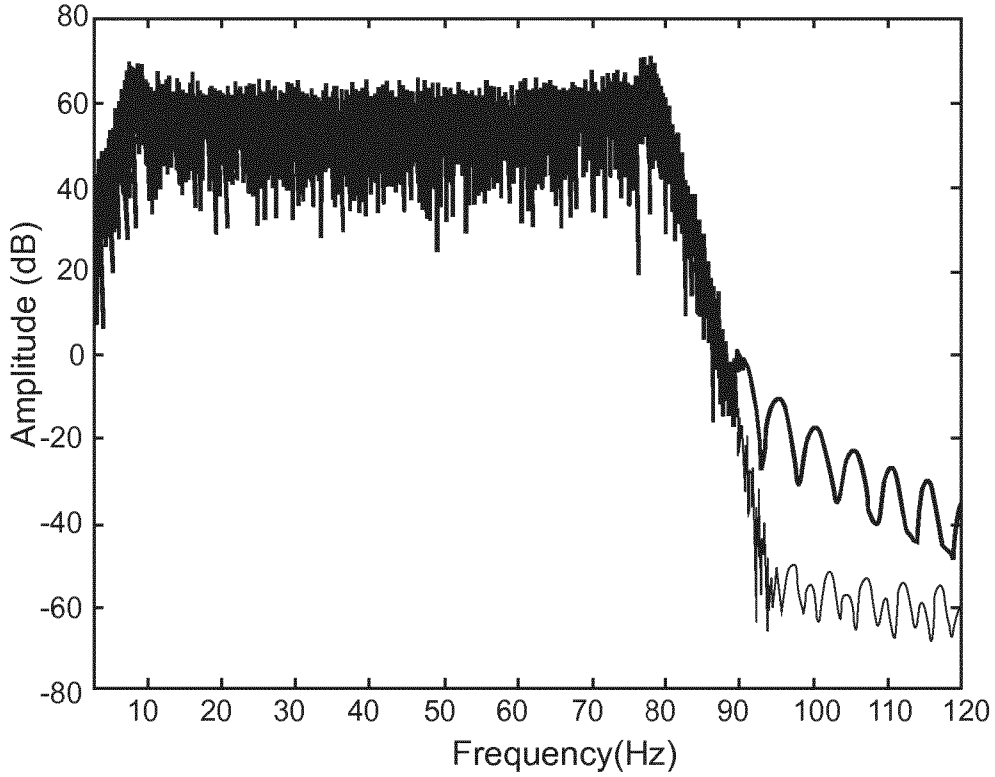


Fig. 15

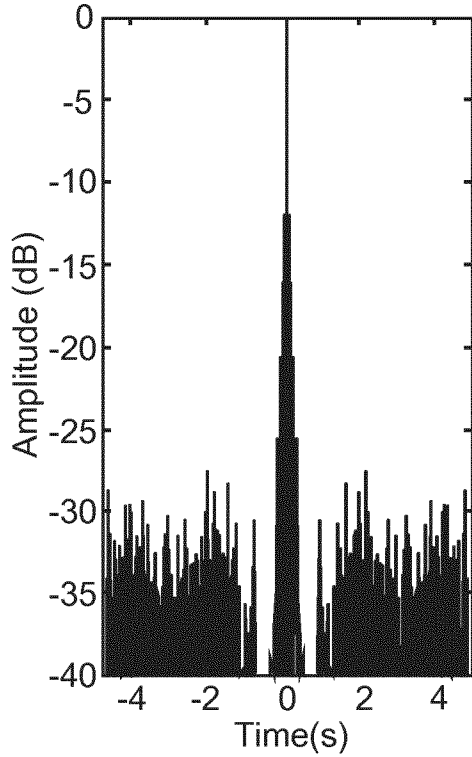


Fig. 16

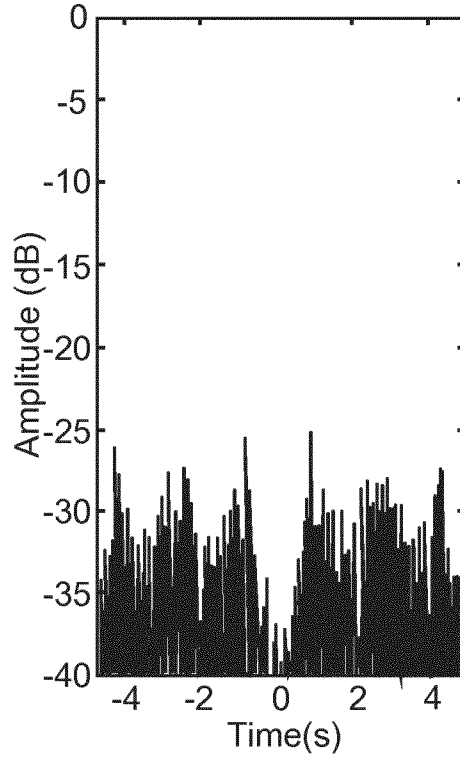


Fig. 17

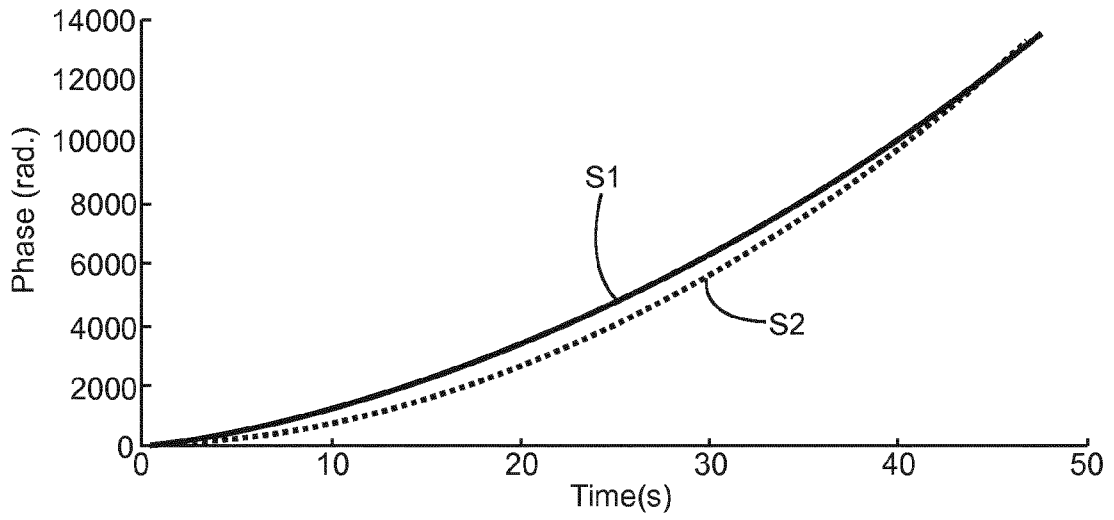


Fig. 18

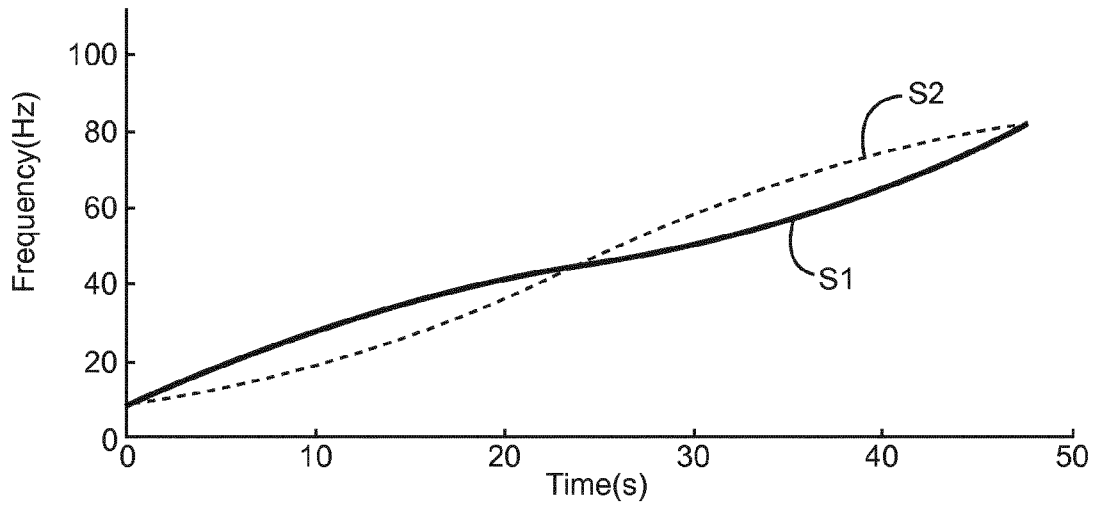


Fig. 19

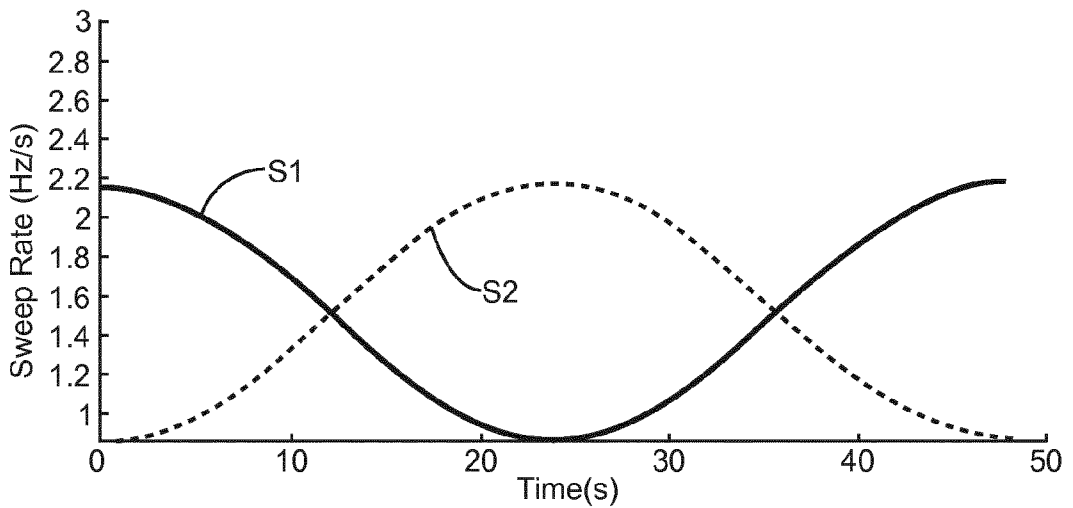


Fig. 20

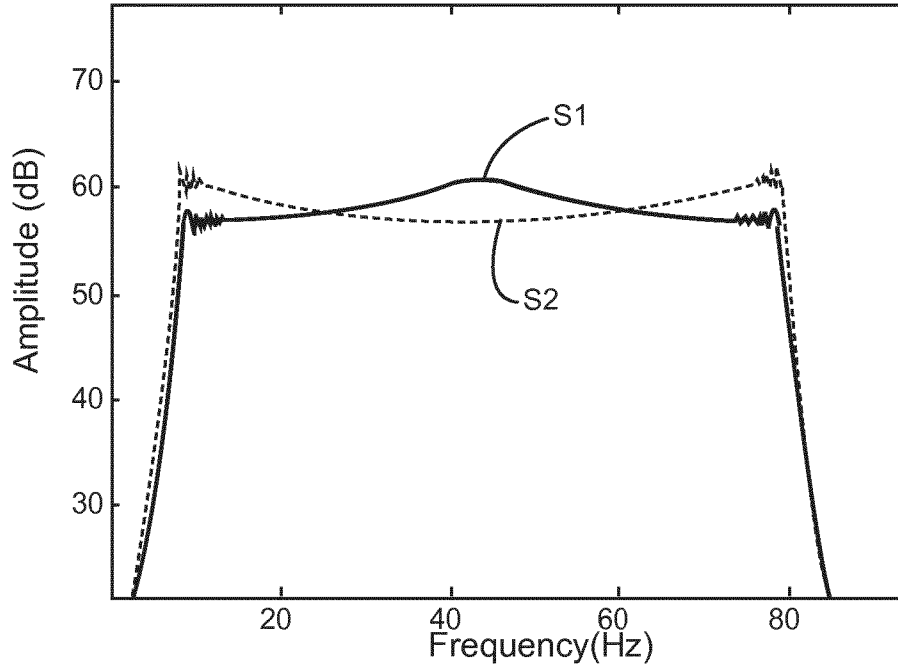


Fig. 21

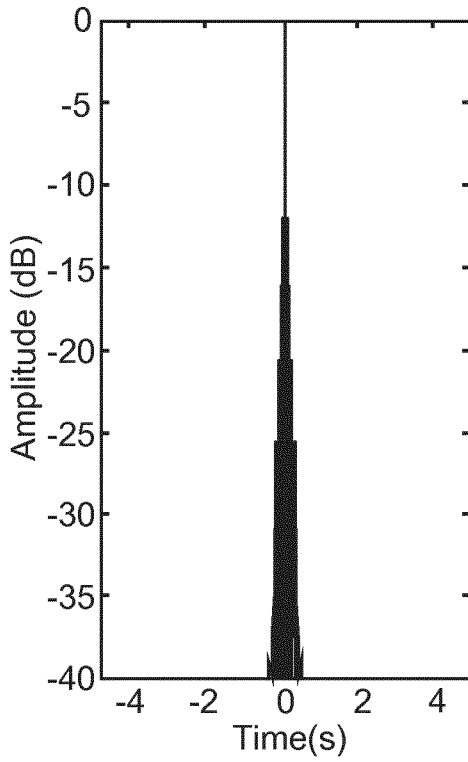


Fig. 22

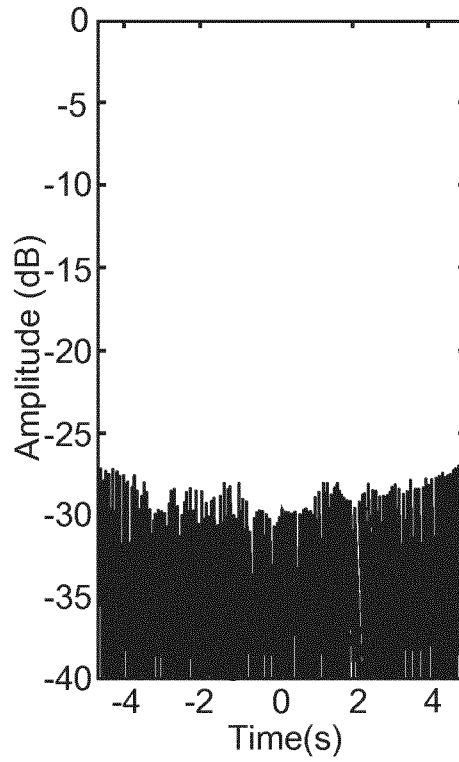


Fig. 23

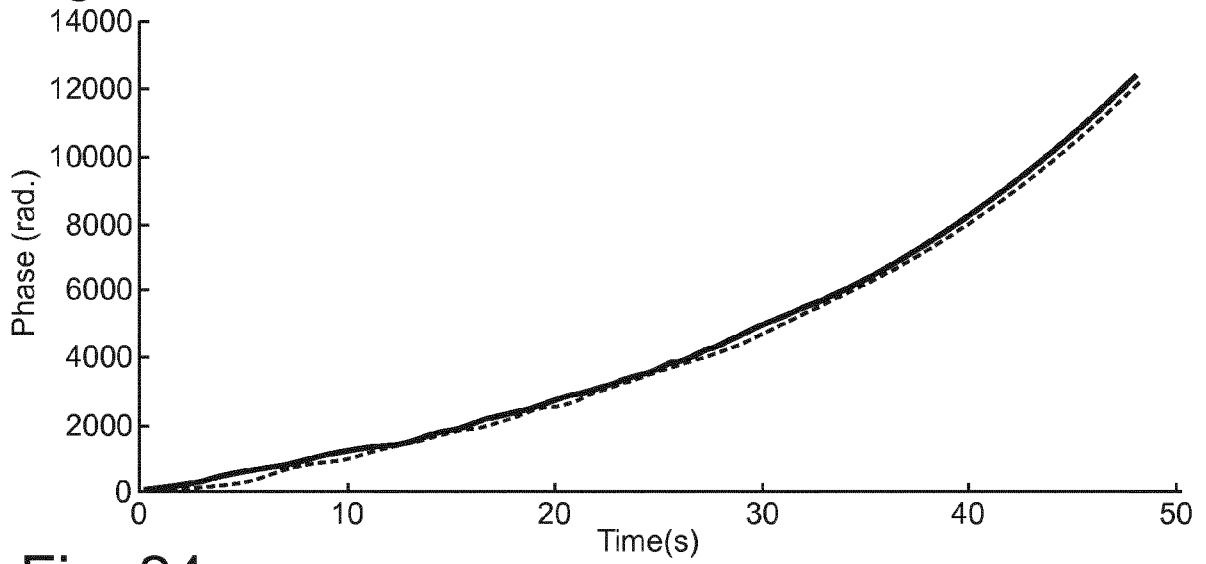


Fig. 24

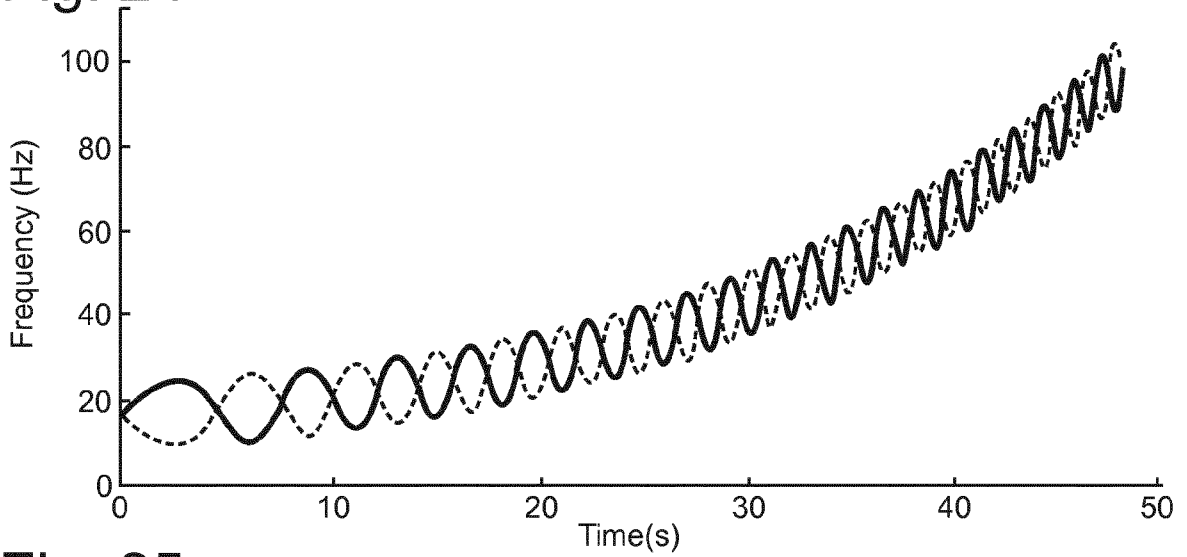


Fig. 25

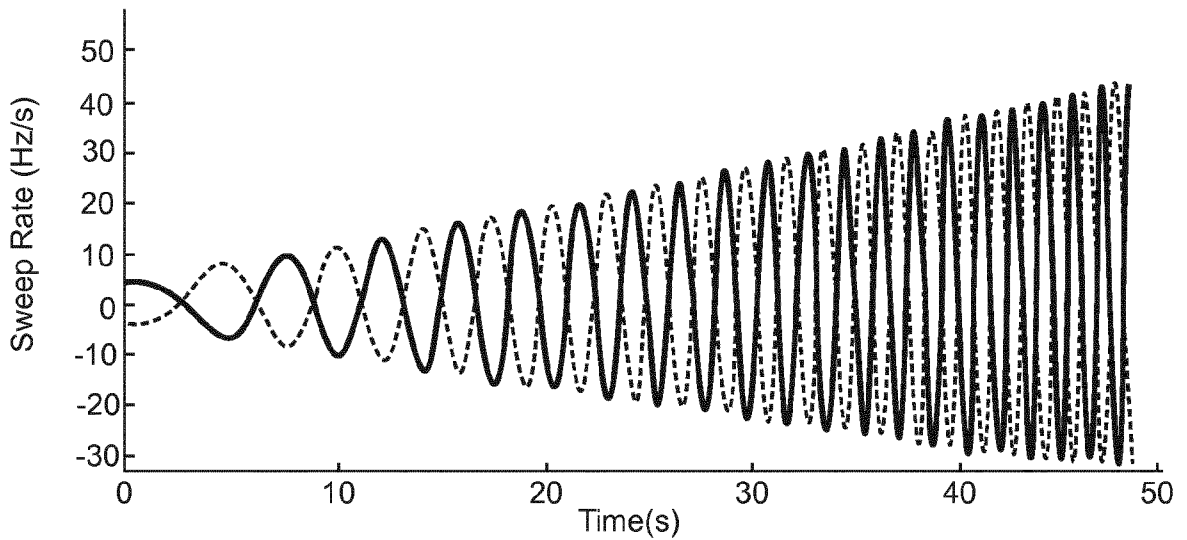


Fig. 26

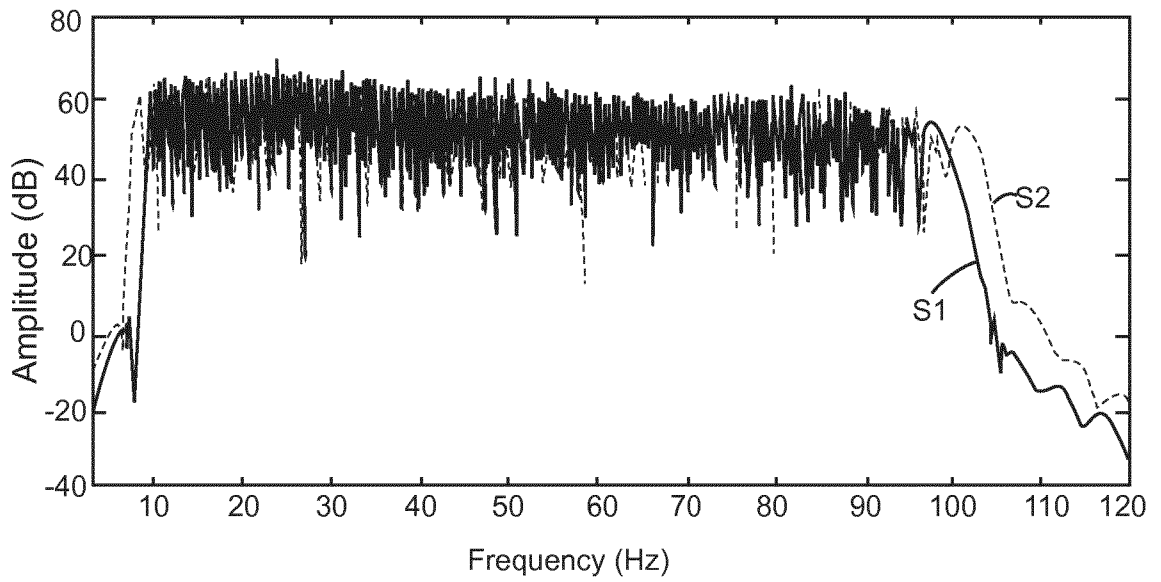


Fig. 27

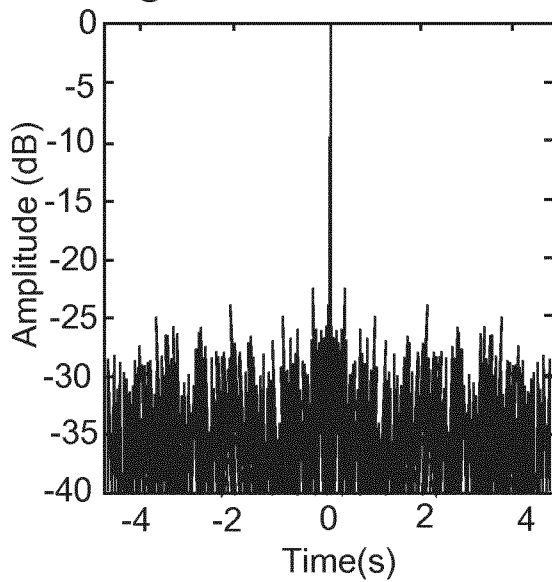
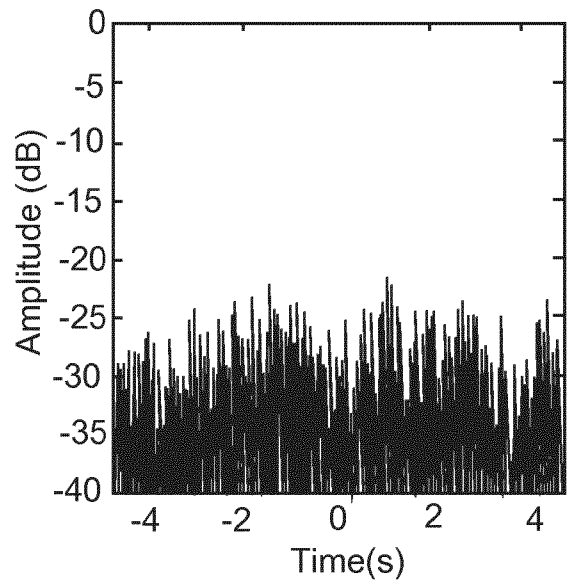
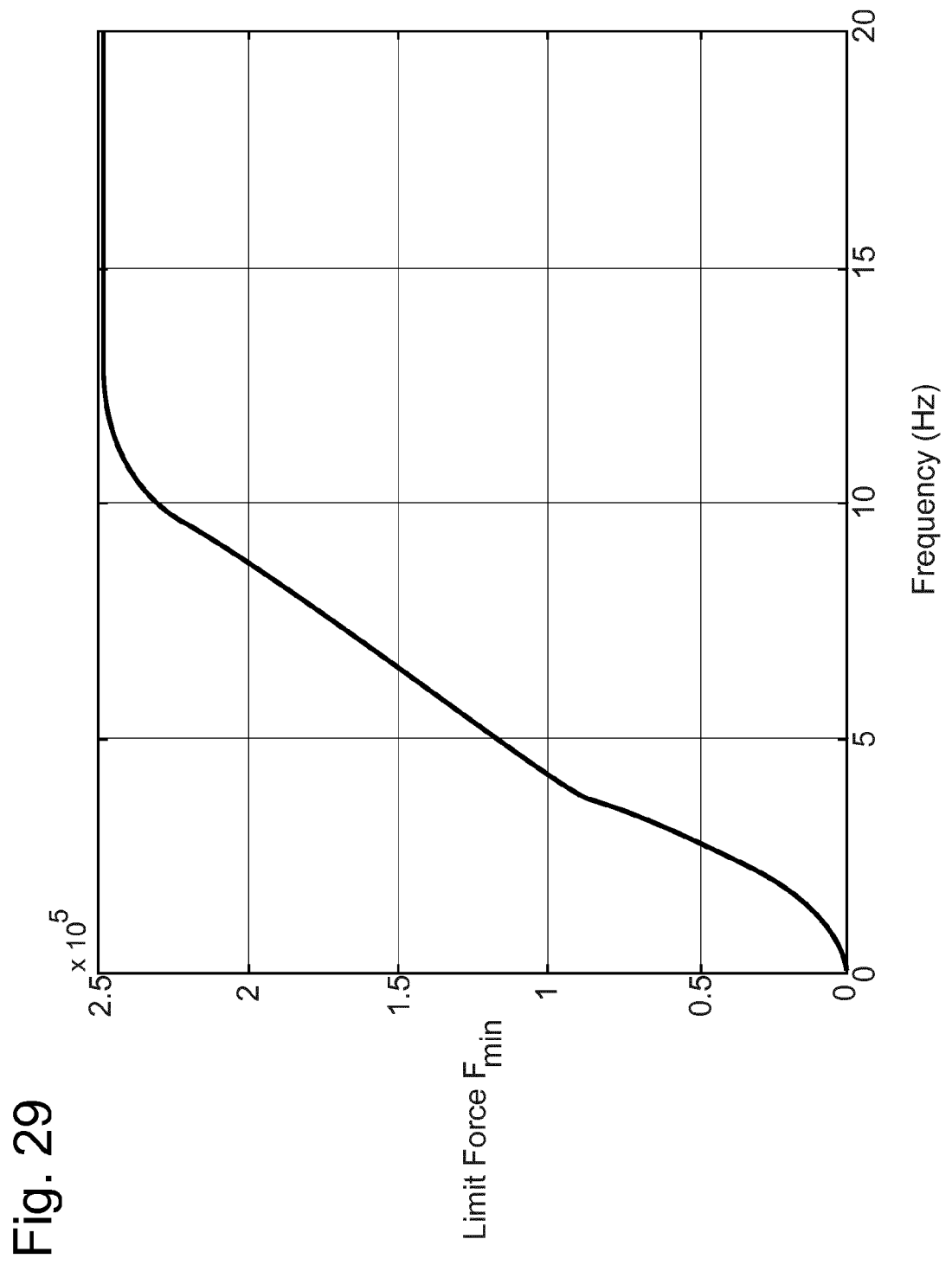


Fig. 28





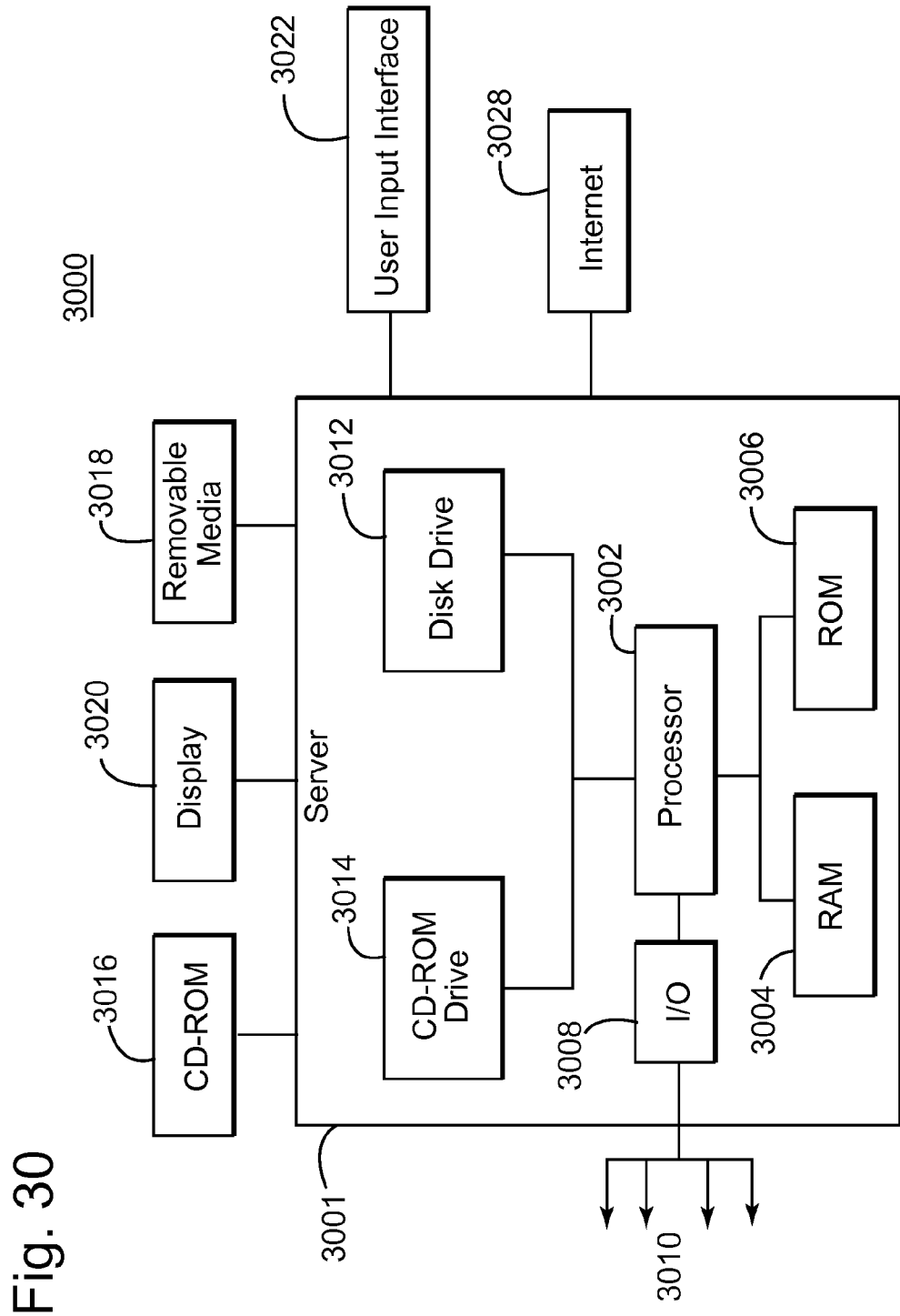


Fig. 30

INTERNATIONAL SEARCH REPORT

International application No PCT/EP2014/063454

A. CLASSIFICATION OF SUBJECT MATTER INV. G01V1/00 ADD.				
According to International Patent Classification (IPC) or to both national classification and IPC				
B. FIELDS SEARCHED				
Minimum documentation searched (classification system followed by classification symbols) G01V				
Documentation searched other than minimum documentation to the extent that such documents are included in the fields searched				
Electronic data base consulted during the international search (name of data base and, where practicable, search terms used) EPO-Internal, WPI Data				
C. DOCUMENTS CONSIDERED TO BE RELEVANT				
Category*	Citation of document, with indication, where appropriate, of the relevant passages	Relevant to claim No.		
X	US 2009/010103 A1 (SALLAS JOHN J [US] ET AL SALLAS JOHN JAMES [US] ET AL) 8 January 2009 (2009-01-08) abstract; figures 2,4,5 paragraphs [0016], [0034] - [0040], [0043], [0044], [0049], [0058], [0061] - [0081]	1,4-11, 14-20		
X	US 2004/044478 A1 (MOERIG RAINER [US]) 4 March 2004 (2004-03-04) abstract; figures 2,4,9 paragraphs [0001] - [0003], [0009], [0010], [0034] - [0040], [0044] - [0047], [0053] - [0055]	1-4,6,7, 9,11,20		
----- -/--				
<table style="width: 100%; border: none;"> <tr> <td style="width: 50%; border: none;"><input checked="" type="checkbox"/> Further documents are listed in the continuation of Box C.</td> <td style="width: 50%; border: none;"><input checked="" type="checkbox"/> See patent family annex.</td> </tr> </table>			<input checked="" type="checkbox"/> Further documents are listed in the continuation of Box C.	<input checked="" type="checkbox"/> See patent family annex.
<input checked="" type="checkbox"/> Further documents are listed in the continuation of Box C.	<input checked="" type="checkbox"/> See patent family annex.			
* Special categories of cited documents :				
"A" document defining the general state of the art which is not considered to be of particular relevance "E" earlier application or patent but published on or after the international filing date "L" document which may throw doubts on priority claim(s) or which is cited to establish the publication date of another citation or other special reason (as specified) "O" document referring to an oral disclosure, use, exhibition or other means "P" document published prior to the international filing date but later than the priority date claimed	"T" later document published after the international filing date or priority date and not in conflict with the application but cited to understand the principle or theory underlying the invention "X" document of particular relevance; the claimed invention cannot be considered novel or cannot be considered to involve an inventive step when the document is taken alone "Y" document of particular relevance; the claimed invention cannot be considered to involve an inventive step when the document is combined with one or more other such documents, such combination being obvious to a person skilled in the art "&" document member of the same patent family			
Date of the actual completion of the international search	Date of mailing of the international search report			
19 November 2014	26/11/2014			
Name and mailing address of the ISA/ European Patent Office, P.B. 5818 Patentlaan 2 NL - 2280 HV Rijswijk Tel. (+31-70) 340-2040, Fax: (+31-70) 340-3016	Authorized officer de Jong, Frank			

INTERNATIONAL SEARCH REPORT

International application No

PCT/EP2014/063454

C(Continuation). DOCUMENTS CONSIDERED TO BE RELEVANT

Category*	Citation of document, with indication, where appropriate, of the relevant passages	Relevant to claim No.
X	US 2012/290214 A1 (HUO SHOUDONG [SA] ET AL) 15 November 2012 (2012-11-15) abstract; figure 3 paragraphs [0004] - [0006], [0008], [0011], [0014], [0082], [0083], [0100] - [0104], [0128] -----	1-4,6,7, 9-14,16, 17,19,20
X	US 2010/118647 A1 (TENGHAMN STIG RUNE LENNART [US]) 13 May 2010 (2010-05-13) abstract; figures 1A,1B paragraphs [0060] - [0080] -----	1,4,6,7, 9-11,14, 16,17, 19,20
X	US 2012/287755 A1 (EICK PETER M [US] ET AL) 15 November 2012 (2012-11-15) abstract paragraphs [0009], [0019], [0021] -----	1,6,9, 11,16,20

INTERNATIONAL SEARCH REPORT

Information on patent family members

International application No PCT/EP2014/063454

Patent document cited in search report	Publication date	Patent family member(s)	Publication date
US 2009010103 A1	08-01-2009	AU 2008275375 A1	15-01-2009
		CA 2693394 A1	15-01-2009
		US 2009010103 A1	08-01-2009
		WO 2009009334 A1	15-01-2009
		ZA 201000059 A	29-09-2010

US 2004044478 A1	04-03-2004	AT 354809 T	15-03-2007
		EP 1549975 A1	06-07-2005
		ES 2282688 T3	16-10-2007
		RU 2344443 C2	20-01-2009
		US 2004044478 A1	04-03-2004
		WO 2004023163 A1	18-03-2004

US 2012290214 A1	15-11-2012	CA 2833968 A1	22-11-2012
		CN 103649780 A	19-03-2014
		EP 2707757 A1	19-03-2014
		US 2012290214 A1	15-11-2012
		WO 2012158452 A1	22-11-2012

US 2010118647 A1	13-05-2010	AU 2009225290 A1	27-05-2010
		BR PI0904311 A2	01-02-2011
		CA 2682087 A1	07-05-2010
		CN 101738632 A	16-06-2010
		CO 6270038 A1	20-04-2011
		EA 200901351 A1	30-08-2010
		EP 2184619 A2	12-05-2010
		US 2010118647 A1	13-05-2010

US 2012287755 A1	15-11-2012	CA 2833316 A1	22-11-2012
		EP 2707758 A2	19-03-2014
		US 2012287755 A1	15-11-2012
		WO 2012158545 A2	22-11-2012
